

---

# **St. Augustine Vision Plan Update: Resiliency and Sustainability AGENDA**

1. Welcome
  2. City of St. Augustine Vision Plan Introduction and Background
  3. NEFRC Vision Plan Update Discussion Feedback
  4. Specific Discussion Related to Sustainability and Resiliency
  5. Breakout Session with Additional Discussion and Comments
  6. Thank you for your participation and Adjournment
-

---

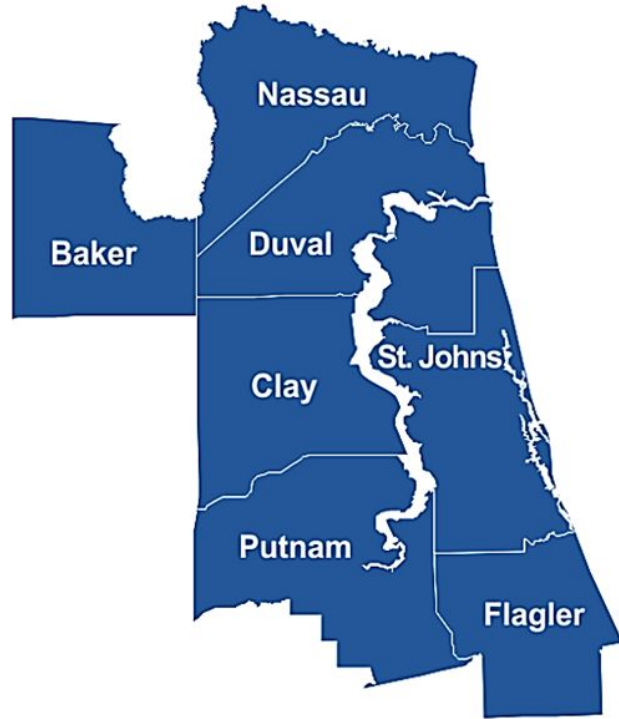
# St. Augustine Vision Plan Update: Meeting #2 Resiliency and Sustainability

September 16th, 2024



---

# Northeast Florida Regional Council



## Our Mission

To celebrate the unique assets of Northeast Florida and to engage its people, businesses, governments, and organizations

---

# Meet the NEFRC Team

- ❖ **Monica Dominguez**, Economic Development Program Manager
- ❖ **Eric Anderson**, AICP, Deputy CEO
- ❖ **Cassidy Taylor**, Post-Disaster Economic Recovery Coordinator
- ❖ **Joe Cearley**, Senior Resilience Planner



---

# The Vision Plan will include:

Your feedback will be used in the development of the updated Vision Plan. The final product will include:

- ❖ A community vision statement
  - ❖ Confirmation and development of themes
  - ❖ A summary of public engagement meetings
-

---

# Objectives for the Meeting

- ❖ St. Augustine will provide update on projects related to resiliency and sustainability.
  - ❖ NEFRC will ask you question on your thoughts on resiliency and sustainability.
    - You can answer on paper or on online with Mentimeter.
  - ❖ Breakout session - you can provide your thoughts and we will records your answers.
-

---

# Resiliency and Sustainability

- ❖ The goal of **resiliency** is to help a community become strong enough to deal with the effects of climate change and work to stop those effects from getting worse.
- ❖ **Sustainability** means using resources in a way that provides for future use.

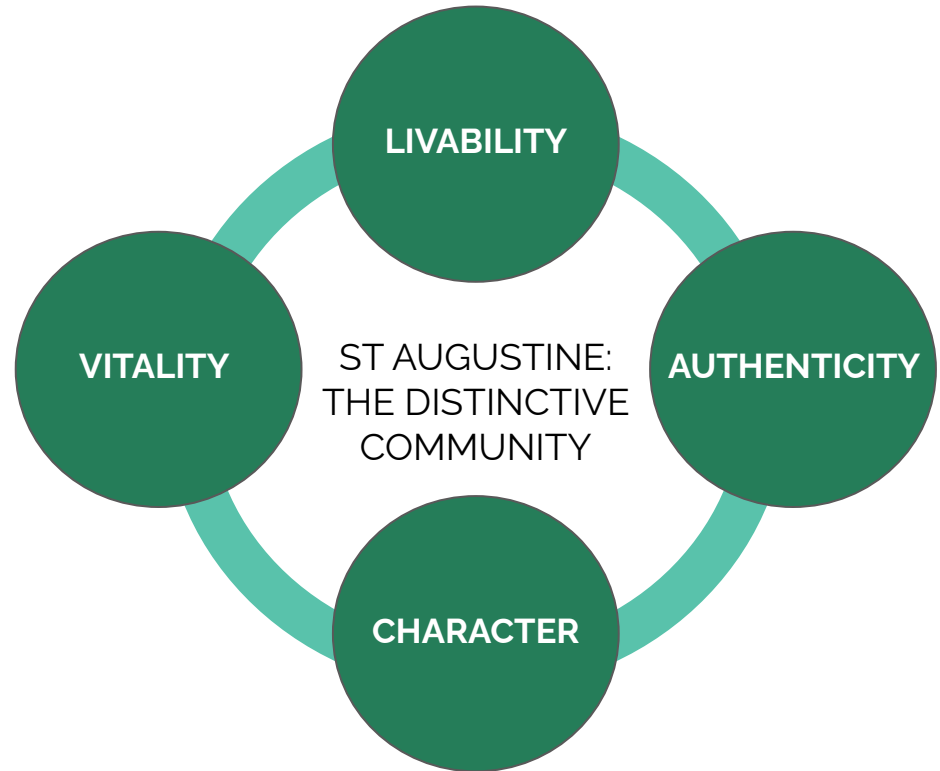


---

# 2014 and Beyond Vision Plan

## Vision Statement:

St. Augustine will be a livable, authentic, waterfront city that builds upon its rich history and environment to create a distinctive community character founded on a healthy and vibrant economy, a diverse mix of people and experiences, and a valuing of its natural assets.



# City of St. Augustine Featured Projects: Livability

- ❖ FY2016: hired a mobility coordinator.
- ❖ FY2020: adoption of the Mobility Plan 2040.
- ❖ FY2022: adoption of the Mobility Fee.
- ❖ FY2016, budget formatted to be in line with vision plan.
- ❖ The city has provided support for the St. Johns County Continuum of Care (CoC)



---

# City of St. Augustine Featured Projects: Authenticity

- ❖ 2015 Neighborhood Zoning Workbooks.
- ❖ Update to the Comprehensive Plan in 2020.
- ❖ FY2016 funding for Historic Preservation Master Plan and in 2018 the Master Plan adopted.



---

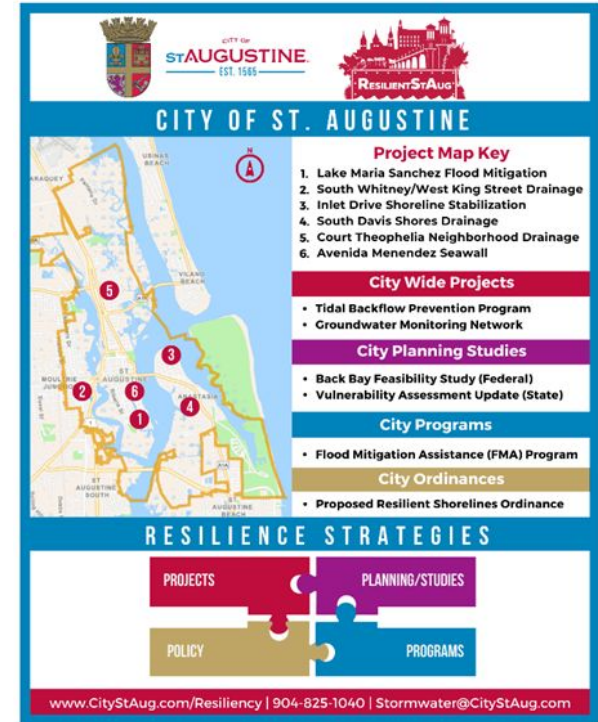
# City of St. Augustine Featured Projects: Character

- ❖ Updated the Event Management Policy (2016)
- ❖ Satellite parking operations
- ❖ In 2015 the City hosted its 450<sup>th</sup> Commemoration
- ❖ Sister City relations which promote historical diversity
- ❖ Design Standards for Entry Corridor Guidelines - Anastasia, San Marco, & West King (2016)



# City of St. Augustine Featured Projects: Vitality

- ❖ COSA Sustainability Plan completed (2019)
- ❖ Studies regarding resiliency within the City with the end goal being to qualify for State and Federal funding of future projects.
- ❖ Projects in the City's Capital Improvements Plan are reviewed, and amended, annually as part of the City's budget.



---

# The Regional Resiliency Action Plan

1. Durable Built Environment
2. Thriving Regional Economy
3. Vibrant Quality of Life
4. Healthy Natural Environment



# NORTHEAST FLORIDA REGIONAL RESILIENCY ACTION PLAN



The Regional Resiliency Action Plan (RRAP) is a coordinated effort by Resilient First Coast (RFC) to address the need for climate resilience in Northeast Florida. The RRAP is comprised of goals, recommendations, and best practices that aim to alleviate the drivers of vulnerability and subsequent climate impacts on our communities. The RRAP provides strategies on a local and regional level for adaptation, mitigation, and recovery.

## HAZARDS



- ✓ Flooding
- ✓ Extreme Heat
- ✓ Severe Weather Events



## DRIVERS OF VULNERABILITY

- Proximity To Water
- Loss of Wetlands
- Economic Inequity
- Unprepared Workforce
- Population Growth
- Transportation Accessibility

## EXACERBATE PROBLEMS



## WHY IS IT NEEDED?

There are many factors that can impact our communities and make them more vulnerable to impact when it comes to climate caused events.

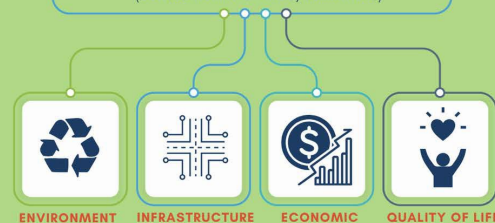
- ✓ The RRAP provides the opportunity to share knowledge, initiatives, and efficient use of resources.
- ✓ The Resilient First Coast provides a multi-disciplinary platform, through their subcommittees, as a resource to the community.
- ✓ The RRAP provides a framework for policymakers. It serves as a basis for strong policy and enforcement to ensure a better future for all.

# NORTHEAST FLORIDA REGIONAL RESILIENCY ACTION PLAN

## PLAN OF ACTION

### RRAP STRUCTURE:

(Derived from RFC Pillars/committees)



Each committee then establishes:

- ✓ Goals
- ✓ Objectives
- ✓ Best Practices

## ACTIONS ESTABLISHED BASED ON ASSET LEVEL



### REGIONALLY SIGNIFICANT ASSETS

01

ASSETS AVAILABLE  
THROUGHOUT THE  
REGION

02

NETWORKS  
THROUGHOUT THE  
REGION

03

## RRAP USER GROUPS

**Local  
Government:**  
Use to inform  
policy

**Regional  
Entities:**  
Determine  
actions most  
beneficial to  
the region

**Businesses,  
Nonprofits,  
Others:** Use  
strategies most  
applicable to  
their needs.

## TIMELINE

July 2023 -  
Began RRAP  
Process

August 2024 -  
Complete Phase 1;  
Background, Goals,  
Objectives, Best  
practices

August 2025 -  
Complete Phase 2;  
Actions, Metrics,  
Funding  
Use Vulnerability  
Assessments

---

# Mentimeter instructions

---

---

**INSERT Demographic questions SLIDES**

---

---

Durable Built Environment

# Should the City focus on adapting to or mitigating weather events?



---

# **Durable Built Environment**

## **Should the City focus on adapting or mitigating weather events?**

- 1. Adapting
  - 2. Mitigating
  - 3. Unsure
-

---

## Durable Built Environment

**Should the City focus on improving aged infrastructure projects or build new resilient infrastructure?**



---

## Durable Built Environment

**Should the City focus on improving aged infrastructure projects or build new resilient infrastructure?**

1. Improve aged infrastructure
  2. Build new resilient infrastructure
  3. unsure
-

## Durable Built Environment

How would you prioritize what the City should focus on protecting?

Natural Environment



Cultural/Historic Resources



Neighborhoods



Businesses



---

## Durable Built Environment

**How would you prioritize what the City should focus on protecting?**

1. The natural environment
2. Cultural & historical resources
3. Neighborhoods
4. Businesses

(rank)

---

---

Thriving Regional Economy

**How should the City help local businesses become more resilient and sustainable?**

(comment long form)

---

# How would you prioritize these economic objectives?

**Housing Stability**



**Smart Growth Practices**



**Workforce Development**



**Culturally Significant  
Economic Assets**



---

## Thriving Regional Economy

### **How would you prioritize these economic objectives?**

1. Housing stability
2. Smart Growth Practices
3. Workforce Development
4. Protection of culturally significant economic assets.

(rank)

---

## Vibrant Quality of Life

How would you prioritize the City's efforts to focus on mobility and promote walkability?

Higher density



More sidewalks,  
bike paths/trails



Complete streets/  
Traffic calming



More pedestrian-  
only corridors



Easier to drive



---

## Vibrant Quality of Life

# **How would you prioritize the City's efforts to focus on mobility and promote walkability?**

1. Higher density development
  2. More sidewalks and bike paths/ trails
  3. Complete streets/traffic calming
  4. More pedestrian-only corridors
  5. The City should make it easier to drive
-

# Healthy Natural Environment

## Do you support green infrastructure?



**Living Shorelines**



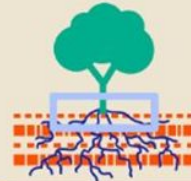
**Oyster Reefs**



**Rain Gardens**



**Waterfront Parks**



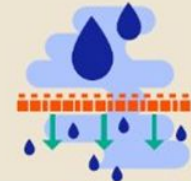
**Tree Trenches**



**Bioswales**



**Green Roofs**



**Permeable Pavements**



**Berms**

---

# Healthy Natural Environment

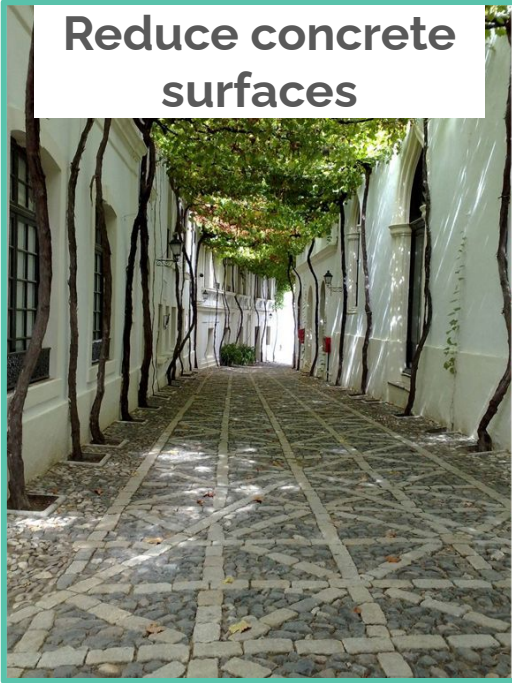
## Do you support green infrastructure?

1. Yes
2. No
3. Unsure

Healthy Natural Environment

# How would you prioritize the following heat reduction strategies?

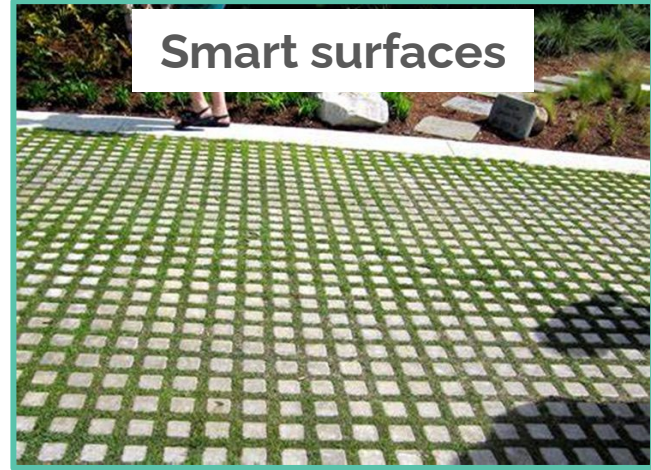
Reduce concrete surfaces



Tree planting &  
Tree restoration



Smart surfaces



---

Healthy Natural Environment

# How would you prioritize the following heat reduction strategies?

1. Reduce concrete surfaces
2. Tree planting and Tree restoration
3. Smart surfaces

(rank)

---

## Sustainability

# How would you prioritize the following sustainable practices?

Renewable Energy



Conservation



Community Gardens



Waste Reduction



Building Design



---

Sustainability

**How would you prioritize the following sustainable practices?**

1. Renewable Energy
2. Conservation
3. Community Gardens/Reducing GHG
4. Waste Reduction
5. Building Design

(rank)

---

---

# **BREAKOUT SESSIONS**

---

---

# Please join us at the next meetings!

***\*\*\*All meetings are from 6pm to 8pm\*\*\****

- ❖ **October 2nd** - VITALITY & LIVABILITY. Willie Galimore Recreation Center
    - 399 Riberia St, St. Augustine, FL 32084
  - ❖ **October 16th** - CHARACTER & AUTHENTICITY. The Waterworks
    - 184 San Marco Ave, St. Augustine, FL 32084
  - ❖ **October 29th** - VITALITY & LIVABILITY. Shiloh Baptist Church
    - 271 W King St, St Augustine, FL 32084
  - ❖ **November 13th** - FINAL MEETING - DID WE GET IT RIGHT? Alcazar Room at the Lightner/City Hall building
    - 75 King St, St. Augustine, FL 32084
-

---

# Thank you!

For questions or comments please contact:

**St. Augustine Vision Team at:**

[StAugustineVision@nefrc.org](mailto:StAugustineVision@nefrc.org)

---

---

**What other 'themes' should  
St. Augustine focus on?**

---

---

**Do you have any additional comments on  
resiliency and sustainability?**

---