



CITY OF
ST AUGUSTINE
EST. 1565



AVENIDA MENENDEZ SEAWALL

What is this Project?

The project will involve repairs of the face and cap of a section of the seawall located along the bayfront in downtown St. Augustine, coupled with design and construction of a two foot wall behind the current seawall. The latter will resemble the parapet wall built adjacent to the promenade constructed in the early 2000s south of the project area. Specifically, the project area extends from the north end of the “new” seawall on the south end to the Bridge of Lions apron on the north. The project length is approximately 570 feet. The Marina Building stands on the western edge of the project area.

Why is this project needed?

The city completed the Avenida Menendez seawall replacement and the current Bayfront Park improvements which have both raised the level of flood in 2013. The area between the City Marina south access pier and the Whites Warf (formerly Santa Maria) restaurant provides a gap in the otherwise elevated flood protection along the Bayfront. This project will “fill the gap” and provide continuity of the City’s target flood protection elevation of +7.1’ NAVD extending along approximately 1,700 LF of the Bayfront. Failure to repair the existing marina seawall and replace the approx. 85 LF of failing seawall will put critical infrastructure and historic properties at risk.

How is this project being funded?

The City of St. Augustine (COSA) has received a grant from FEMA’s HMGP grant program for Hurricane Irma disaster relief, along with funding from the Florida Inland Navigation District (FIND), and will cost-share the remainder of funds needed to complete the project.



How will this project benefit the community?

The primary community need addressed by this project is the enhanced protection from flooding associated with extreme weather events by providing a continuous seawall of equal height. By doing this project, it will provide the protection of the existing pedestrian/recreational path which provides access to the Municipal Marina facilities.

Currently, the elevation gap between the two previous projects provides a vulnerable entry point that allows for flooding that can impeded and compromise the existing public access. Completion of the continuous seawall along the City’s southern bayfront will increase flood protection and minimize the potential property and environmental damage resulting from extreme weather events.



CITY OF
ST AUGUSTINE
EST. 1565



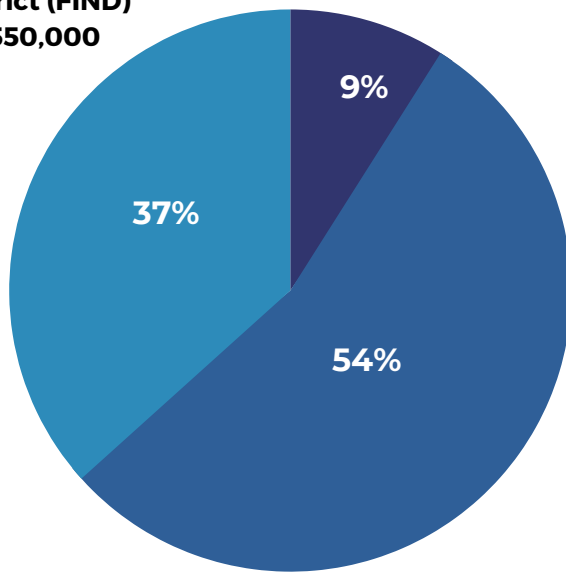
AVENIDA MENENDEZ SEAWALL

ESTIMATED PROJECT COST:
\$1,500,000

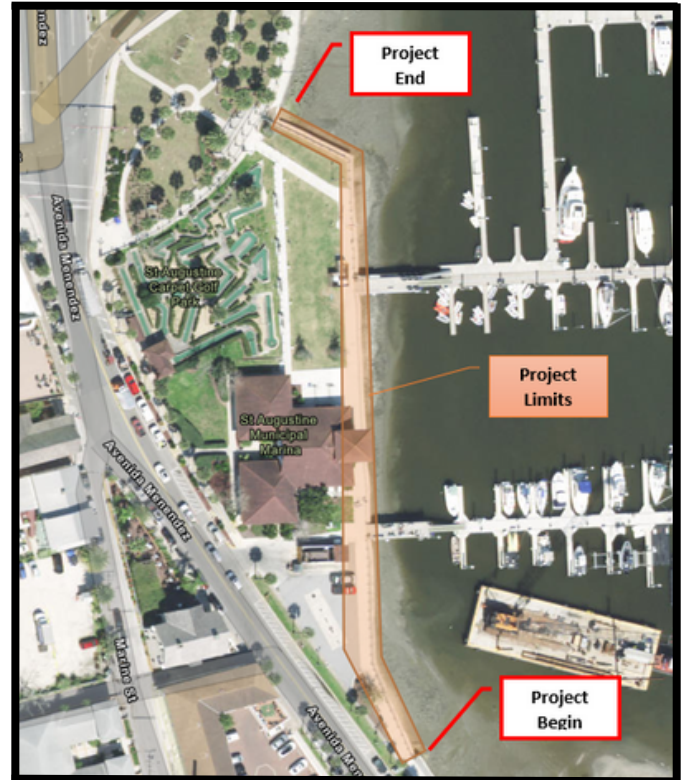
PROJECT LIMITS MAP

Florida Inland
Navigation
District (FIND)
\$550,000

City of St. Augustine
\$134,761.25



HMGP (FEMA)
\$815,238.75



SEAWALL EXAMPLE



PROJECT SCHEDULE 2023-2026

PROJECT PHASE	PROJECT STATUS
PHASE 1	DESIGN AND PERMITTING OF PROJECT
PHASE 2	BIDDING/LOCAL PROCUREMENT
PHASE 3	CONSTRUCTION OF PROJECT