

FEMA 13 Wastewater Upgrades  
For information, please visit:  
[www.CityStAug.com/FEMA13](http://www.CityStAug.com/FEMA13)

Pedestrian and Vehicle Detour Route, Force Main  
(not for construction)



CITY OF  
**ST AUGUSTINE**  
EST. 1565

(904) 825-1040  
[PublicWorks@CityStAug.com](mailto:PublicWorks@CityStAug.com)





FEMA 13 Wastewater Upgrades  
For information, please visit:  
[www.CityStAug.com/FEMA13](http://www.CityStAug.com/FEMA13)



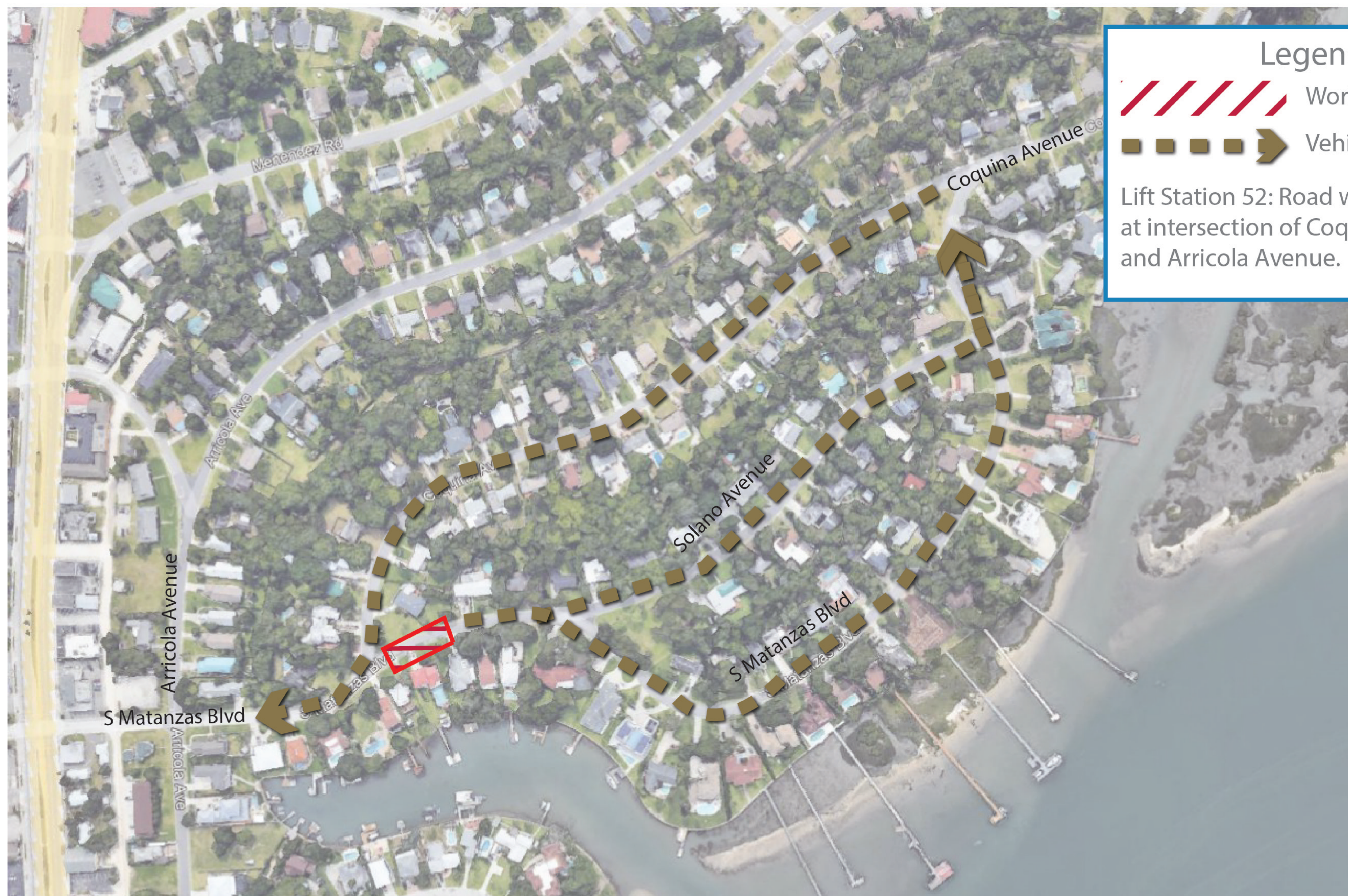
Pedestrian and Vehicle Detour Route, Force Main  
(not for construction)




CITY OF  
**ST AUGUSTINE**  
EST. 1565


(904) 825-1040  
[PublicWorks@CityStAug.com](mailto:PublicWorks@CityStAug.com)





**Legend**

 Work Site

 Vehicle Route

Lift Station 52: Road will be closed at intersection of Coquina Avenue and Arricola Avenue.

FEMA 13 Wastewater Upgrades  
For information, please visit:  
[www.CityStAug.com/FEMA13](http://www.CityStAug.com/FEMA13)



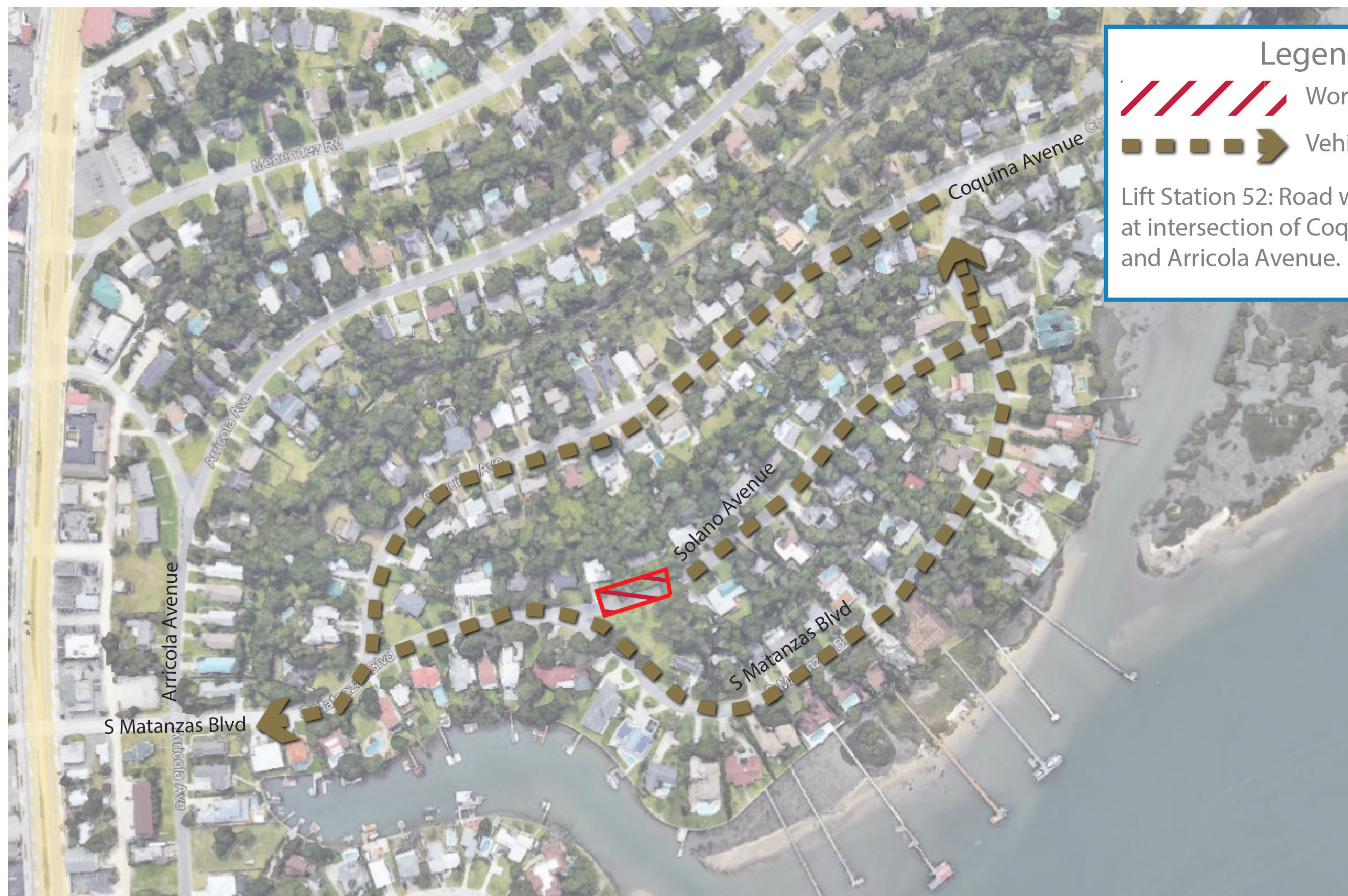
Pedestrian and Vehicle Detour Route, Force Main  
(not for construction)




CITY OF  
**ST AUGUSTINE**  
EST. 1565


(904) 825-1040  
[PublicWorks@CityStAug.com](mailto:PublicWorks@CityStAug.com)





**Legend**

 Work Site

 Vehicle Route

Lift Station 52: Road will be closed at intersection of Coquina Avenue and Arricola Avenue.

FEMA 13 Wastewater Upgrades  
For information, please visit:  
[www.CityStAug.com/FEMA13](http://www.CityStAug.com/FEMA13)



Pedestrian and Vehicle Detour Route, Force Main  
(not for construction)



CITY OF  
**ST. AUGUSTINE**  
EST. 1565

(904) 825-1040  
[PublicWorks@CityStAug.com](mailto:PublicWorks@CityStAug.com)