

STORMWATER UTILITY FEE UPDATE

City of St. Augustine



NEW STORMWATER RATES ON UTILITY BILLS

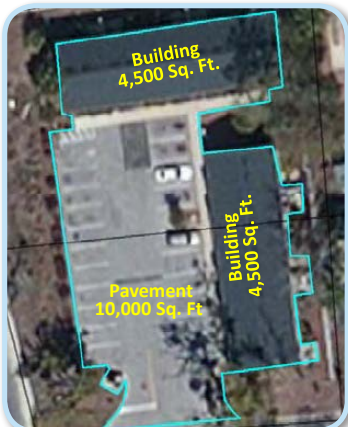
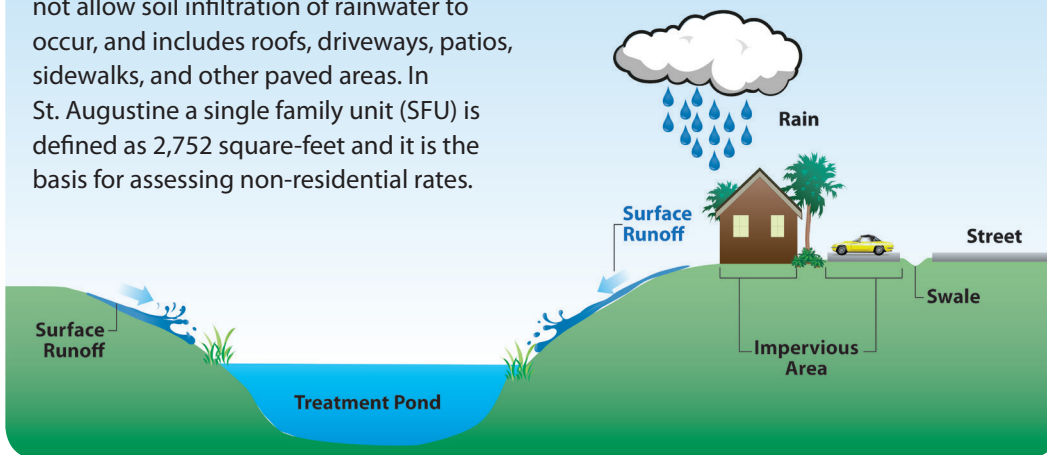
Stormwater rates will be changing starting on your April 2014 utility bill. Some rates will be lower, some higher, depending on the size of your home or developed property.

Residential customers will pay a flat rate, while non-residential properties are computed based on developed, impervious area.

Small home (Impervious area less than 1,444 square-feet)	\$3.64/month
Average home (Impervious area between 1,444 and 4,400 square-feet)	\$7.00/month
Large home (Impervious area greater than 4,400 square-feet)	\$11.20/month
Multifamily unit (condos, apartments, duplex, and other)	\$2.66/month
Mobile home	\$5.95/month
Non-residential customers	\$7.00/billing unit/month

Why does the city need a stormwater fee? The fee goes to cover the cost of maintaining and improving the City's stormwater collection and treatment system.

What is an impervious area? An impervious area is any surface that does not allow soil infiltration of rainwater to occur, and includes roofs, driveways, patios, sidewalks, and other paved areas. In St. Augustine a single family unit (SFU) is defined as 2,752 square-feet and it is the basis for assessing non-residential rates.



NON-RESIDENTIAL RATE EXAMPLE

$$\frac{9,000 \text{ sq-ft} + 10,000 \text{ sq-ft}}{2,752 \text{ sq-ft}} = 6.90 \text{ SFUs}$$

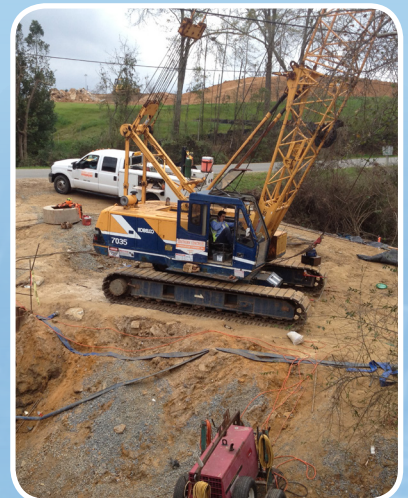
$$6.90 \text{ SFUs} \times \$7.00/\text{month} = \$48.32/\text{month}$$

MARCH 2014



Our Mission

The Department of Public Works is responsible for operating and maintaining our stormwater infrastructure to meet the criteria of the permit administered by the Florida Department of Environmental Protection. Your fees pay for repairs of roadway drainage, new projects, equipment, and administration of the program.



For more information on stormwater and other water resource services, please visit www.StAugSW.com or contact us at 904-825-1040

STORMWATER UTILITY FEE UPDATE

City of St. Augustine



The stormwater utility has funded the construction of several capital improvement projects as well as operation and maintenance of the city's infrastructure.



Maria Sanchez



Palmer Culvert



Riberia Street



Treasury Street Outfall



Oviedo Outfall



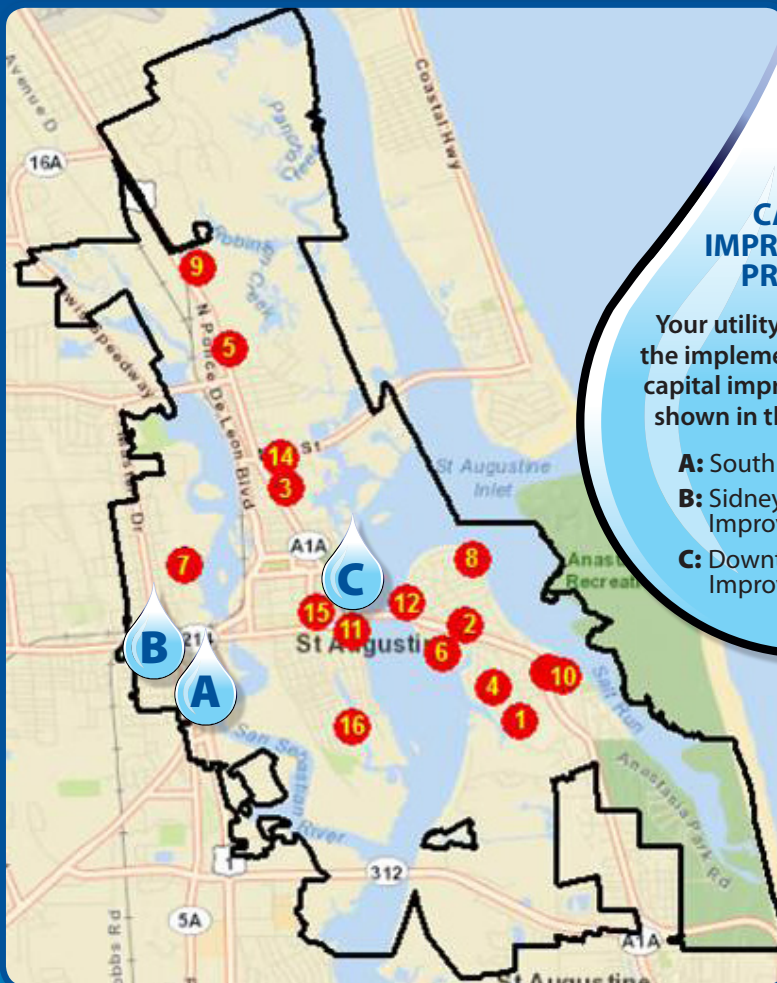
Seawall

FUTURE PROJECTS FUNDED BY YOUR UTILITY

CAPITAL IMPROVEMENT PROJECTS

Your utility dollars will fund the implementation of several capital improvement projects shown in the attached map.

- A:** South Dixie Highway
- B:** Sidney Street Outfall Improvements
- C:** Downtown Drainage Improvements



I think my fee is incorrect, what should I do?

Remember that you need to consider driveways, patios, paved parking areas, and other impervious areas to estimate your fee. If you still feel that your fee needs an adjustment, please contact:

**City Public Works
Engineering Division at
904-825-1040 or visit
www.StAugSW.com**

NEIGHBORHOOD PROJECT CHART

No.	Neighborhood Projects in Alphabetical Order
1	Alerto/Davis Shore Improvements
2	Arrendo/Flagler (North Davis Shores)
3	Ballard/Myrtle Improvements
4	Coquina Ditch
5	Court Edna/Theodore
6	Dolphin Dr. Backflow Preventers (2)
7	Helen Street Improvements
8	Intel Drive North Davis Shores
9	Isla Drive Improvements
10	Magnolia/Lighthouse
11	Marina Intel – Avenue Mendez Cave In
12	North Davis Shores Backflow Preventer
13	Palmetto Stormwater Improvements
14	San Carlos (between US 1 and South Marco)
15	Treasury/Cordova/King Street
16	Washington Street Shoreline