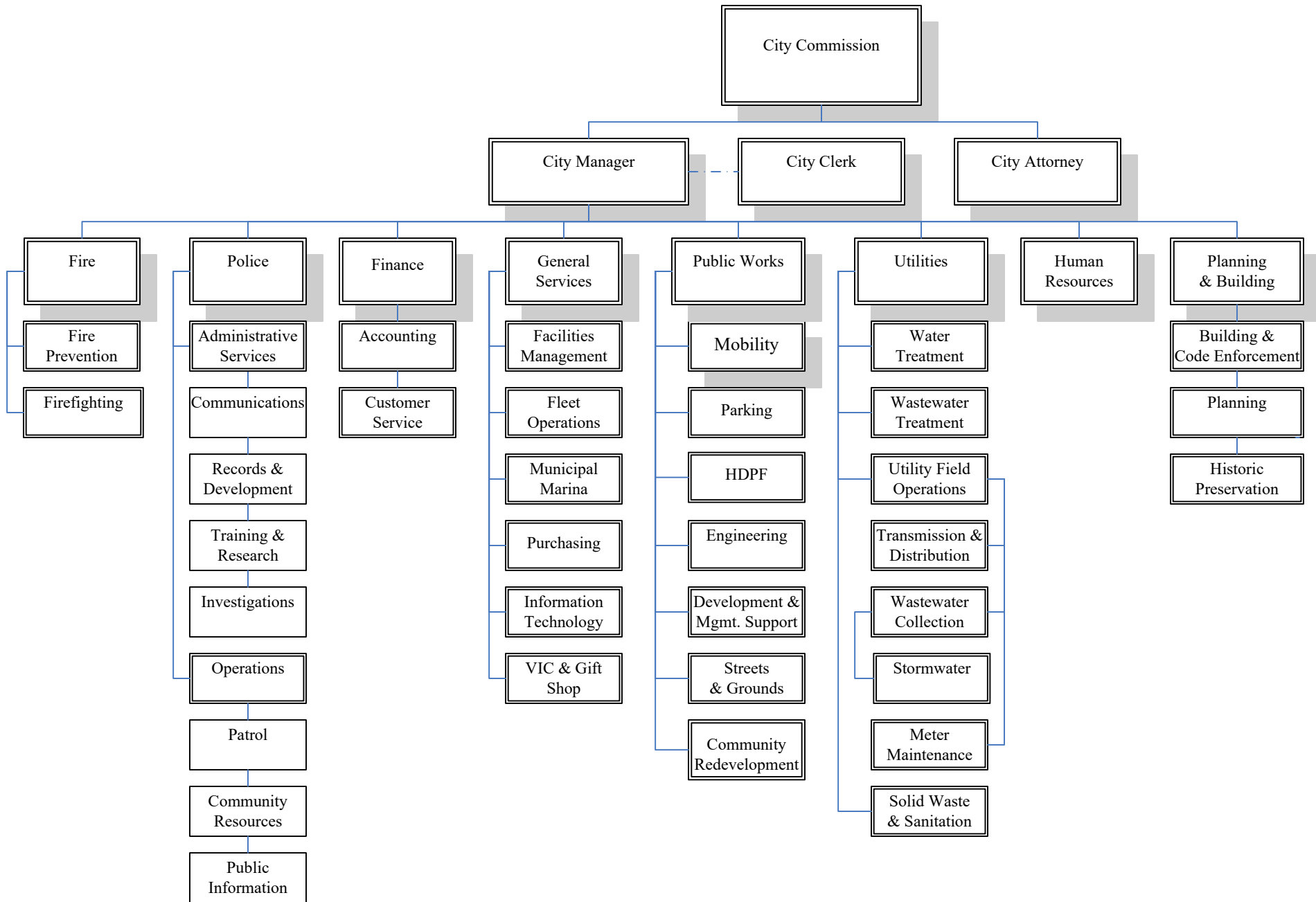
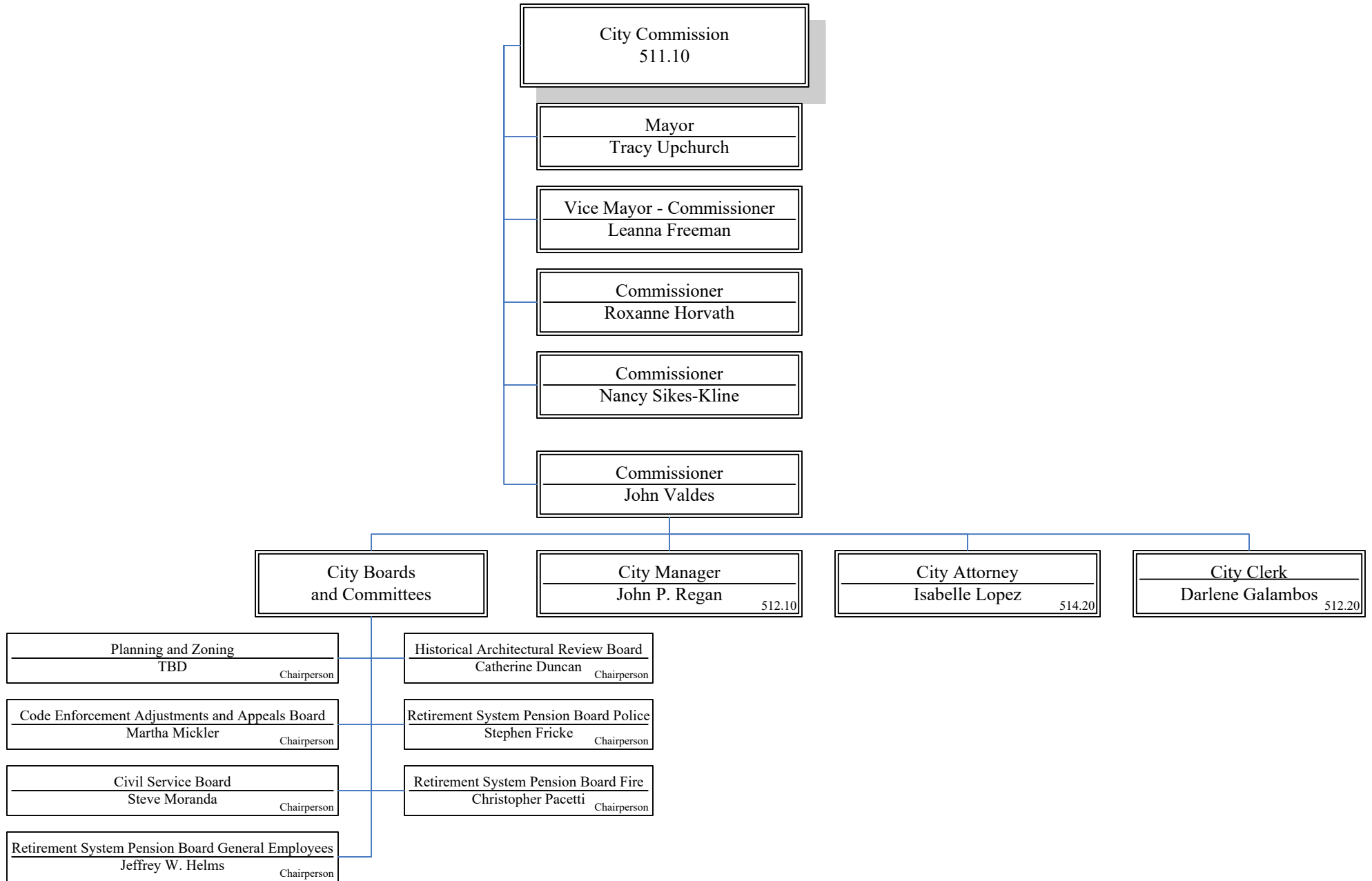
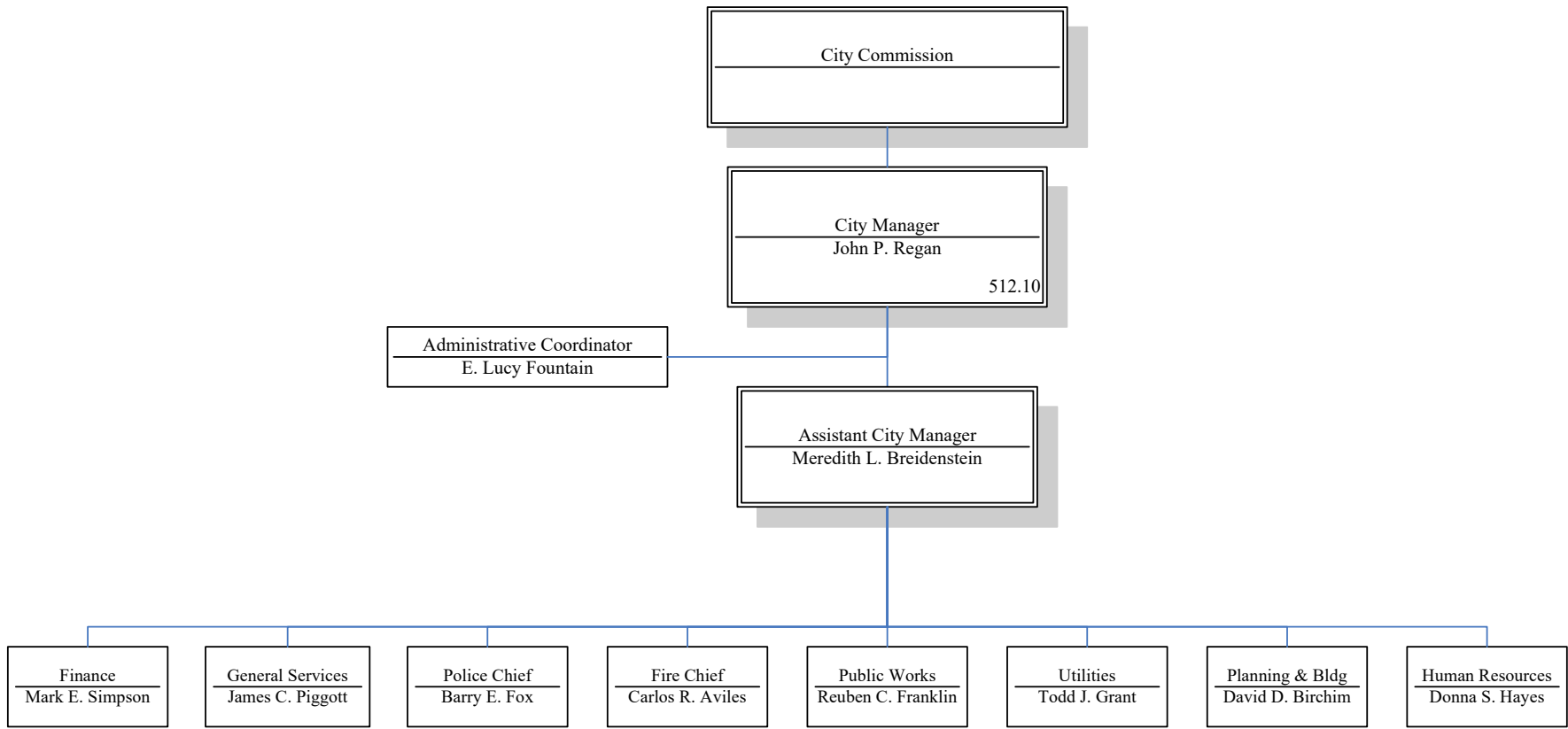


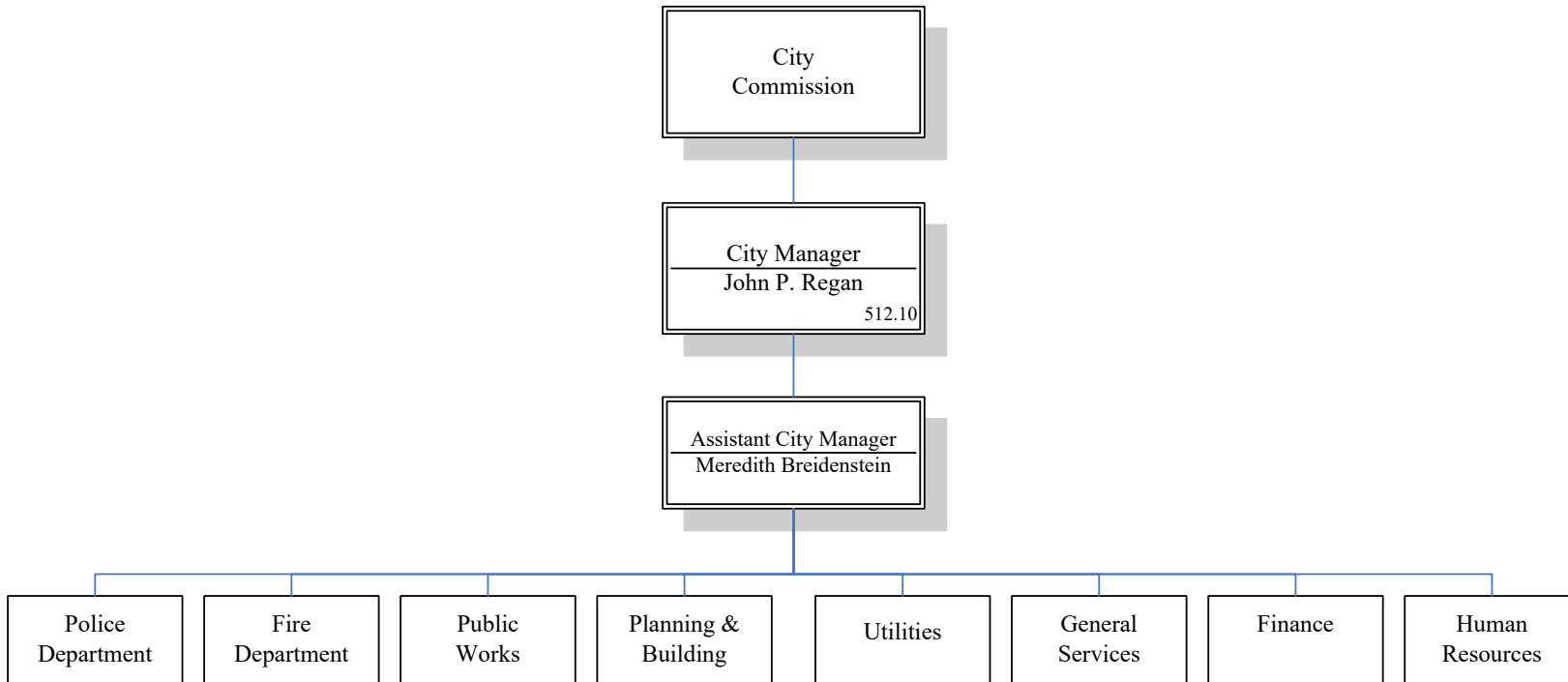
## Organization Charts

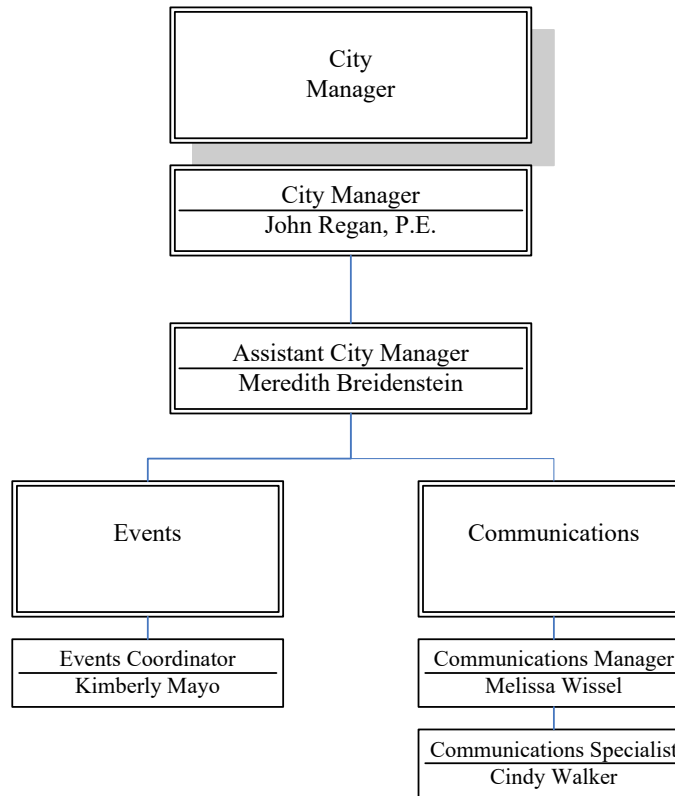
1. City Department & Division Overview
2. City Commission, Manager, Attorney, Clerk, & Boards
3. 3A. – City Manager, Chief Officers, and Directors  
3B. – Departments under City Manager  
3C. – City Manager Divisions – Communications, Events, & Resiliency
4. Finance – Admin, Customer Service, and Accounting
5. 5A. General Services – IT, Fleet, Marina, and Purchasing  
5B. General Services – Facilities Management Group – Facilities Operations  
& Property Services  
5 C. Visitor Information Center
6. Fire Department
7. Planning and Building
8. 8A. Public Works Overview  
8B. Public Works – Streets & Grounds  
8C. Mobility, Parking Enforcement, & Parking Garage  
8D. Public Works – Community Redevelopment, Engineering, &  
Development & Management
9. 9A. Utilities Overview  
9B. Utilities – Solid Waste & Sanitation  
9C. Utilities – Treatment Plants, Environmental Compliance, & GIS  
9C. Utilities – Transmission and Distribution, Wastewater Collection  
Systems and Meter Maintenance
10. Human Resources
11. Police Department  
11A. Police Department Overview  
11B. Police – Administrative Services & Investigation  
11C. Police – Operations & Community Resources
12. City Clerk & City Attorney

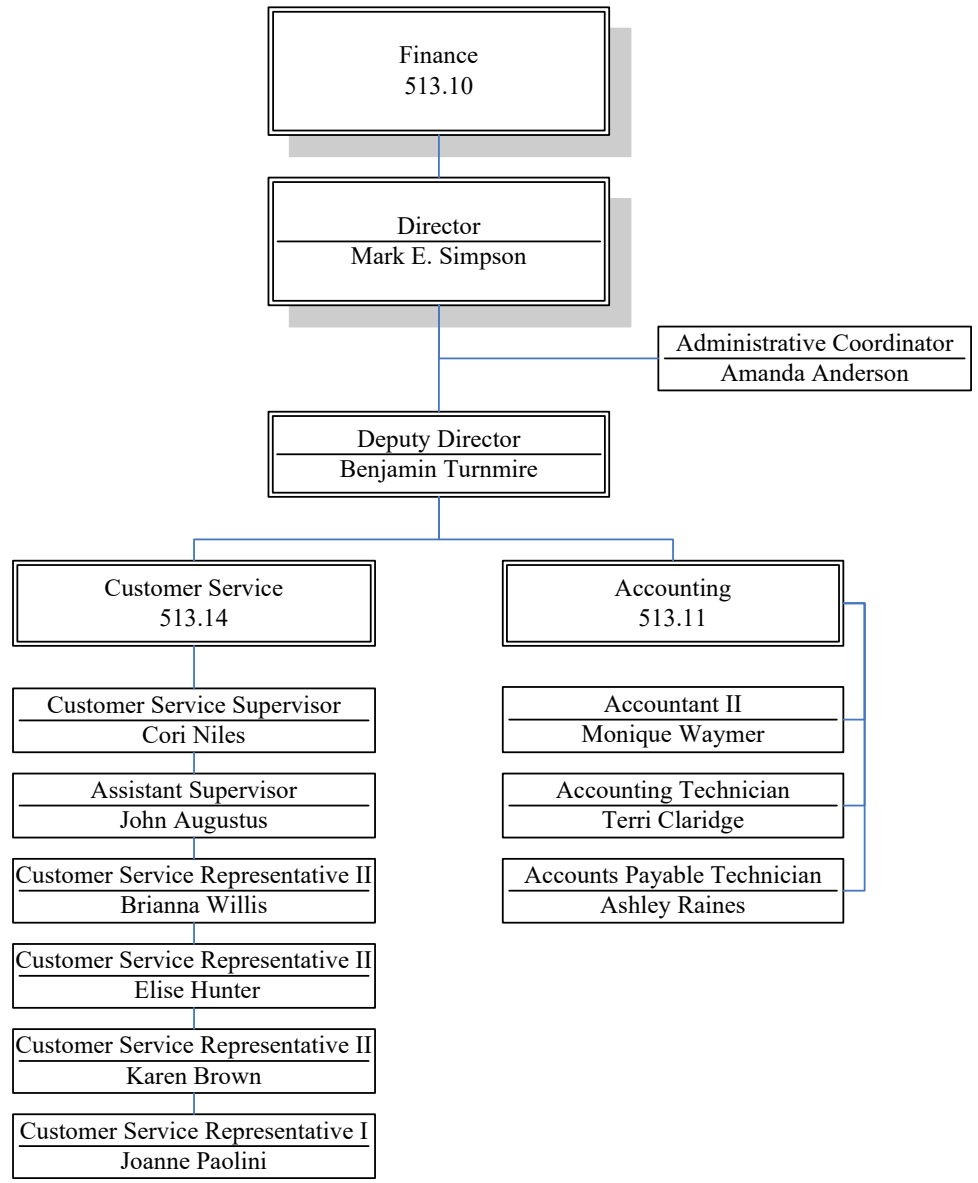


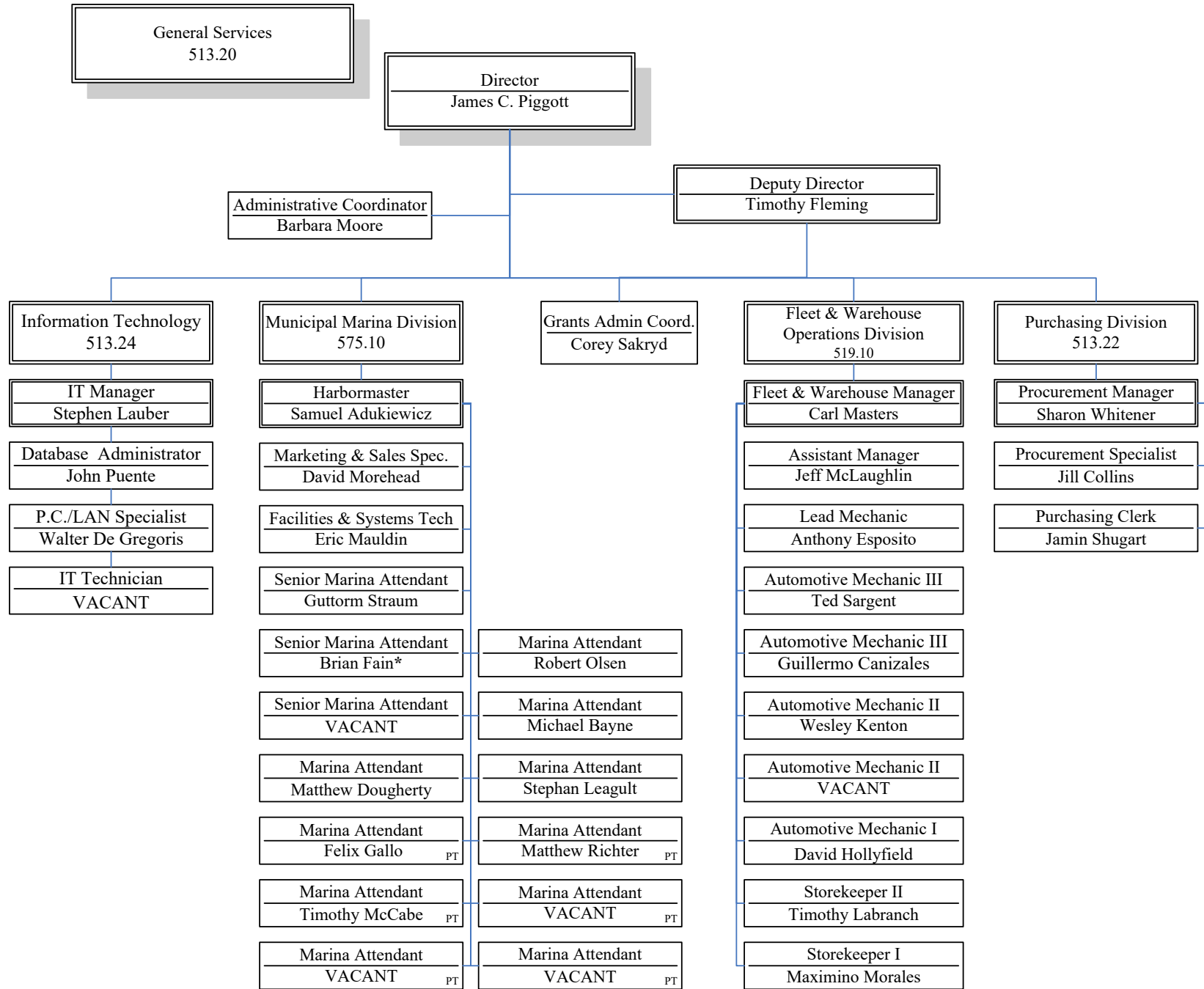




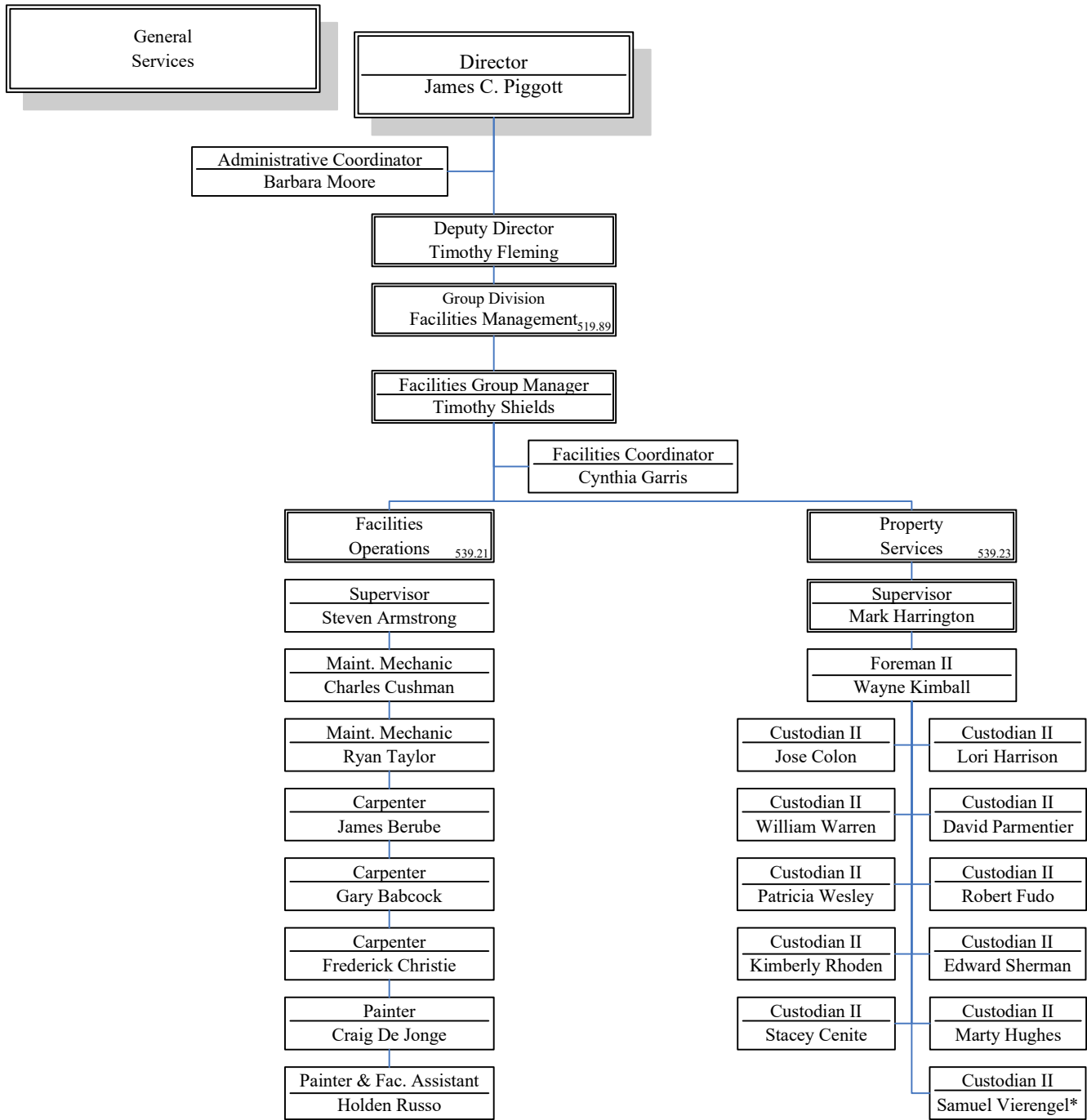








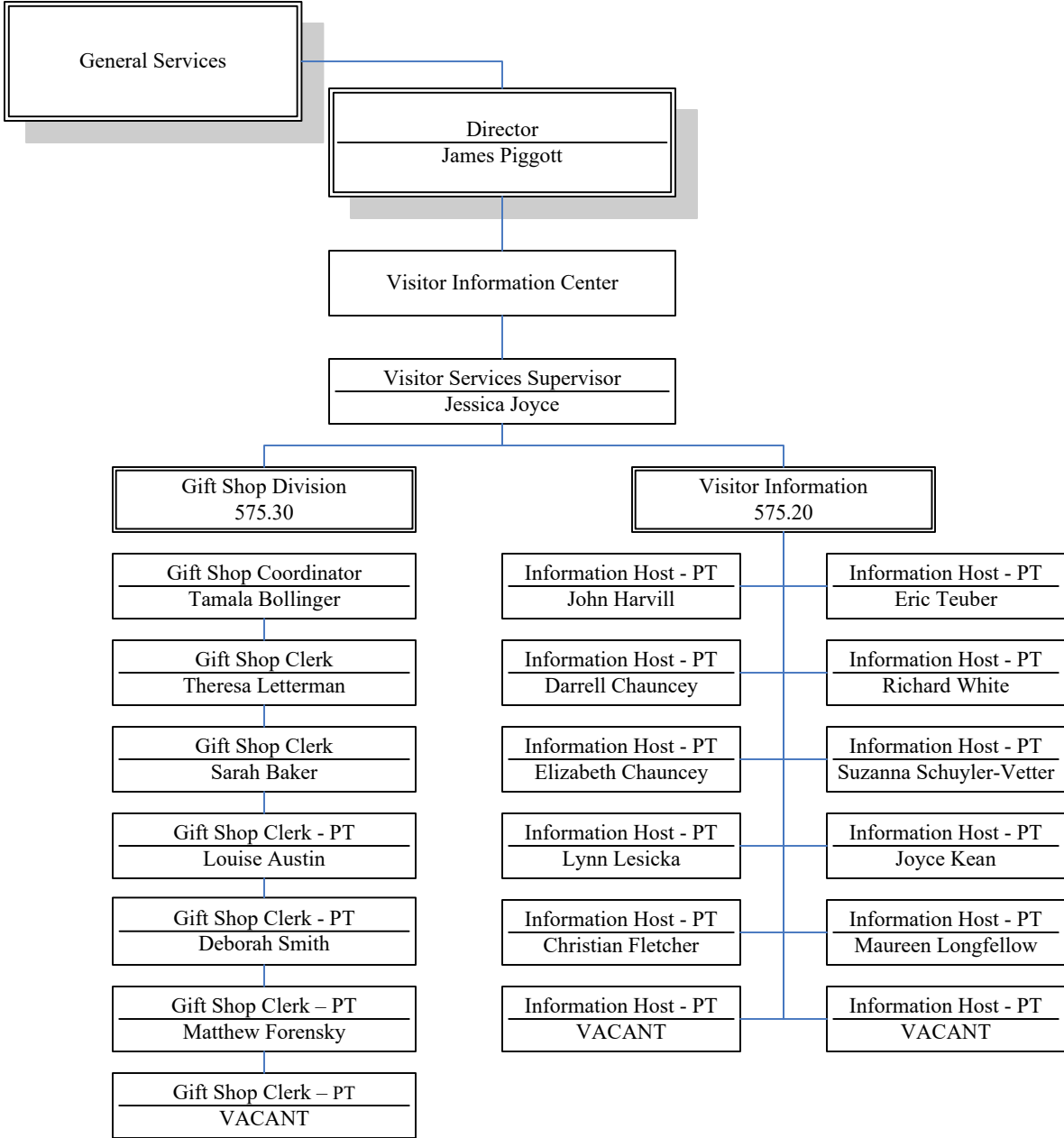


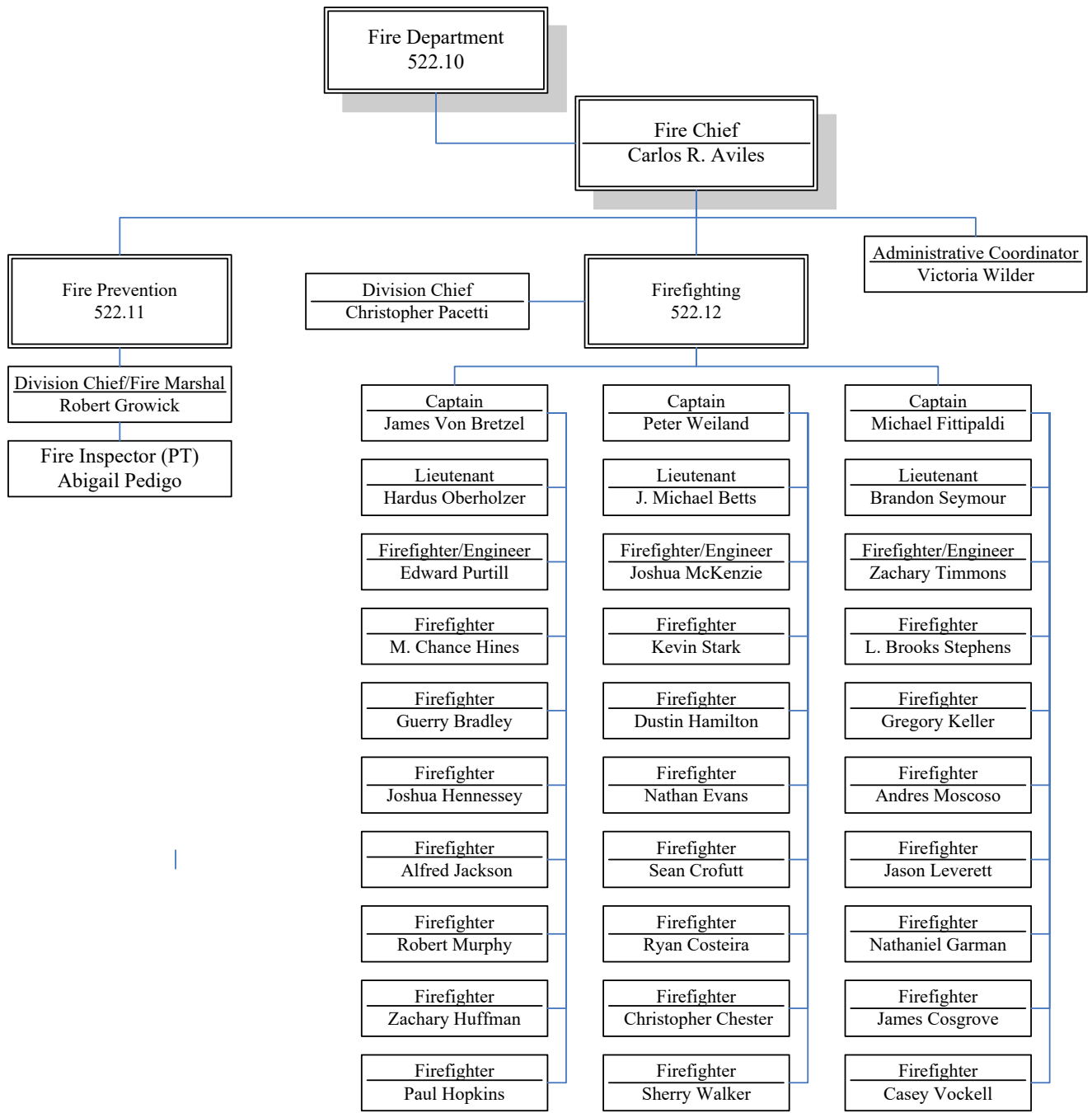


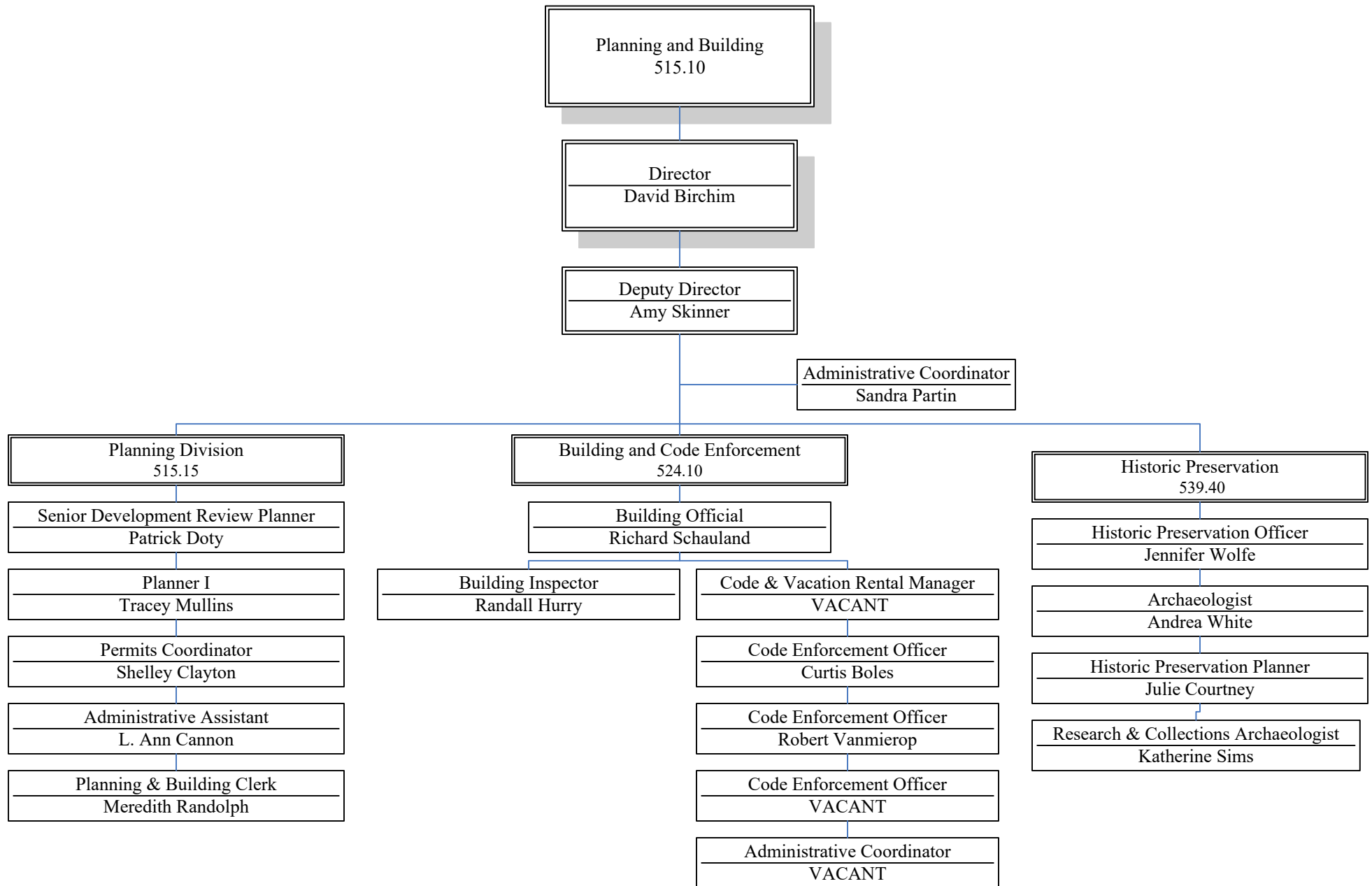
FTE = Property Services = 13, Facilities Operations = 8, Facilities Management = 2

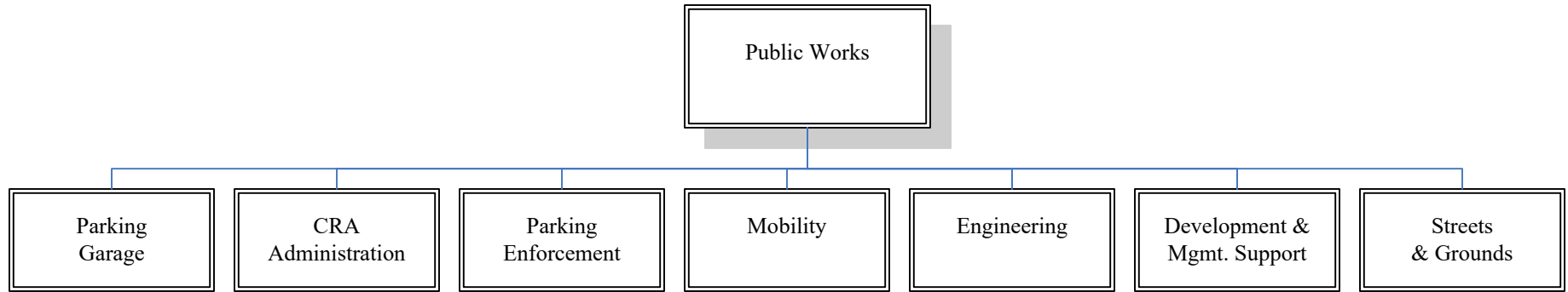
\*October 6<sup>th</sup>

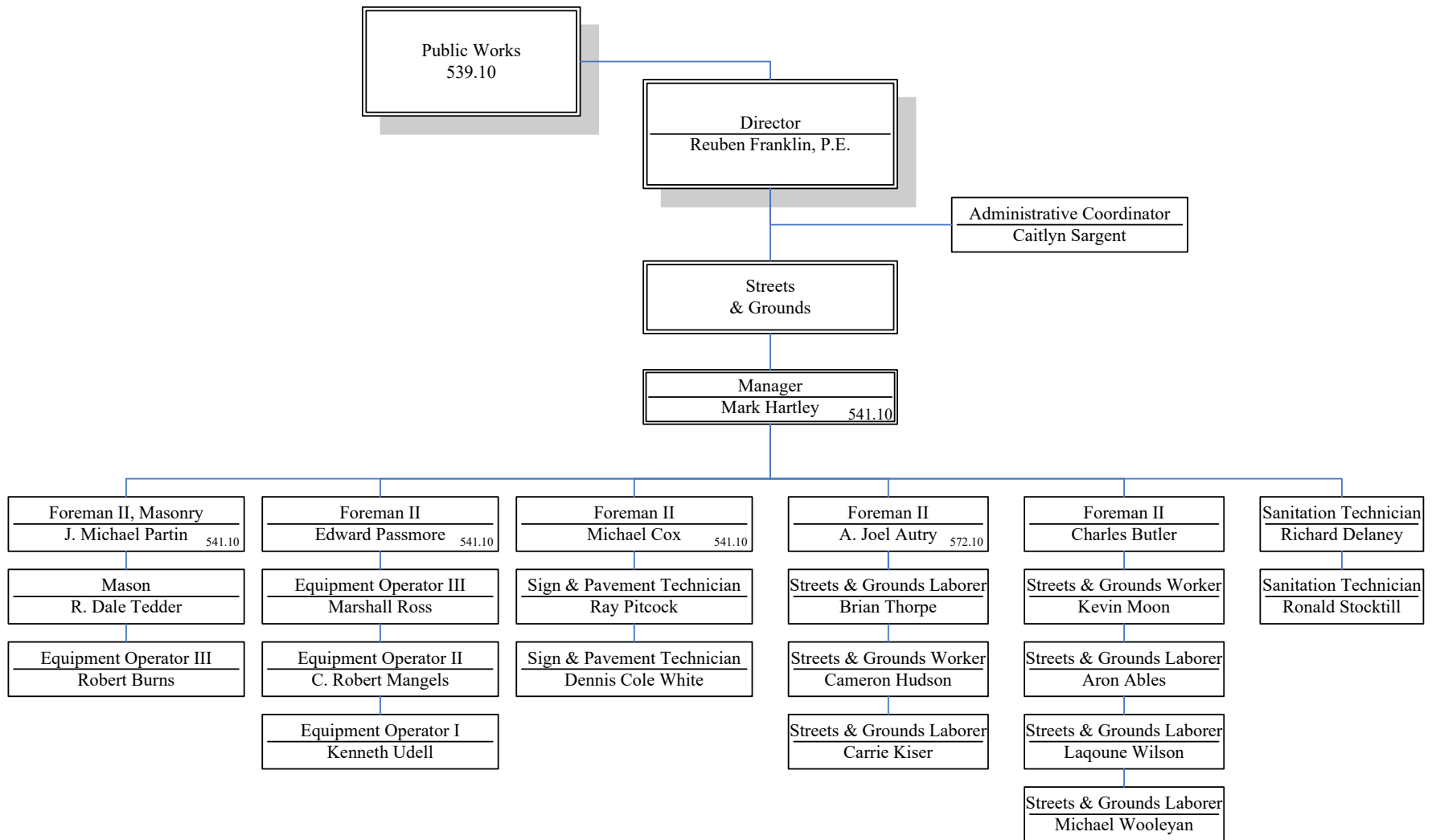
October 1, 2020



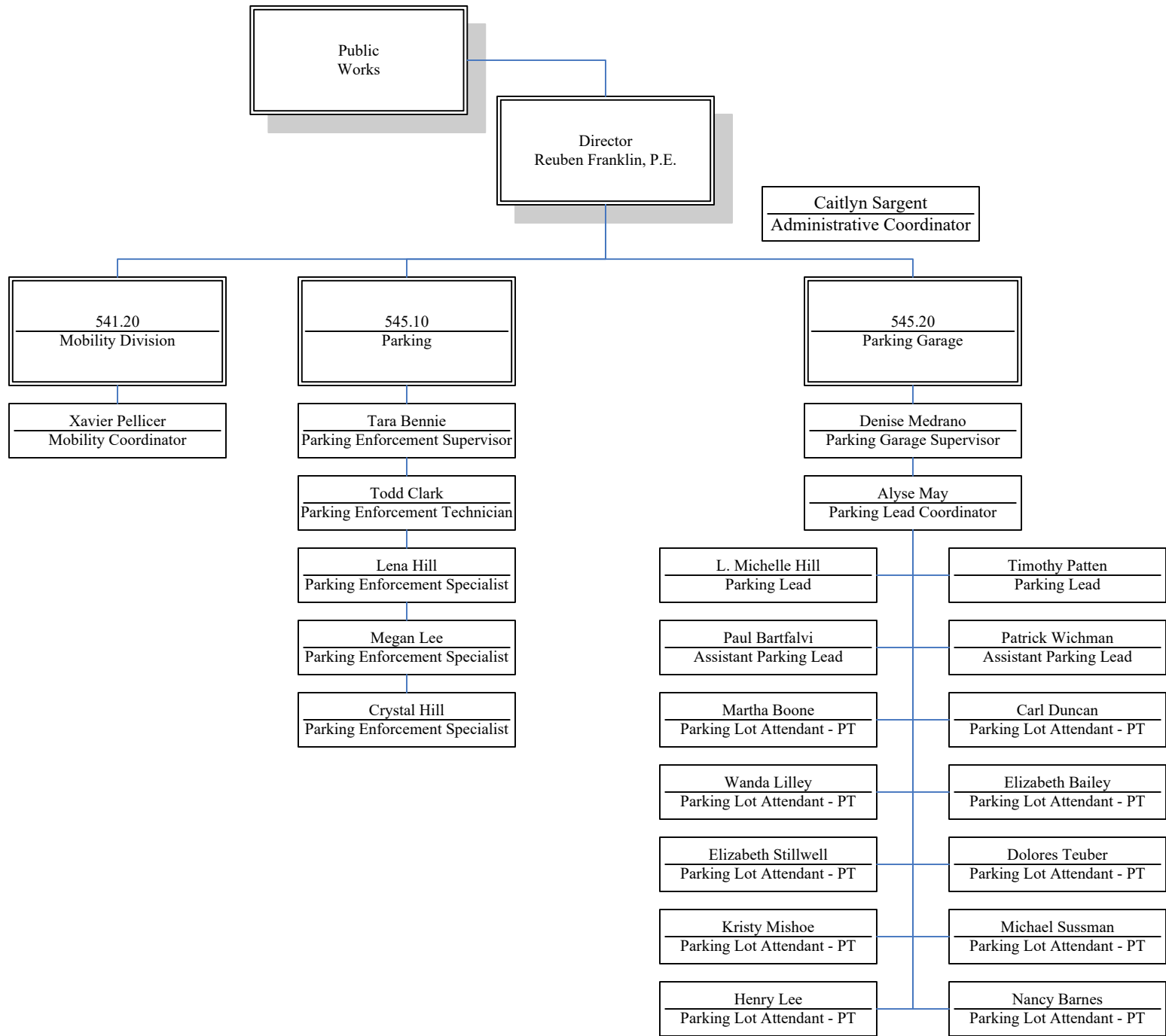


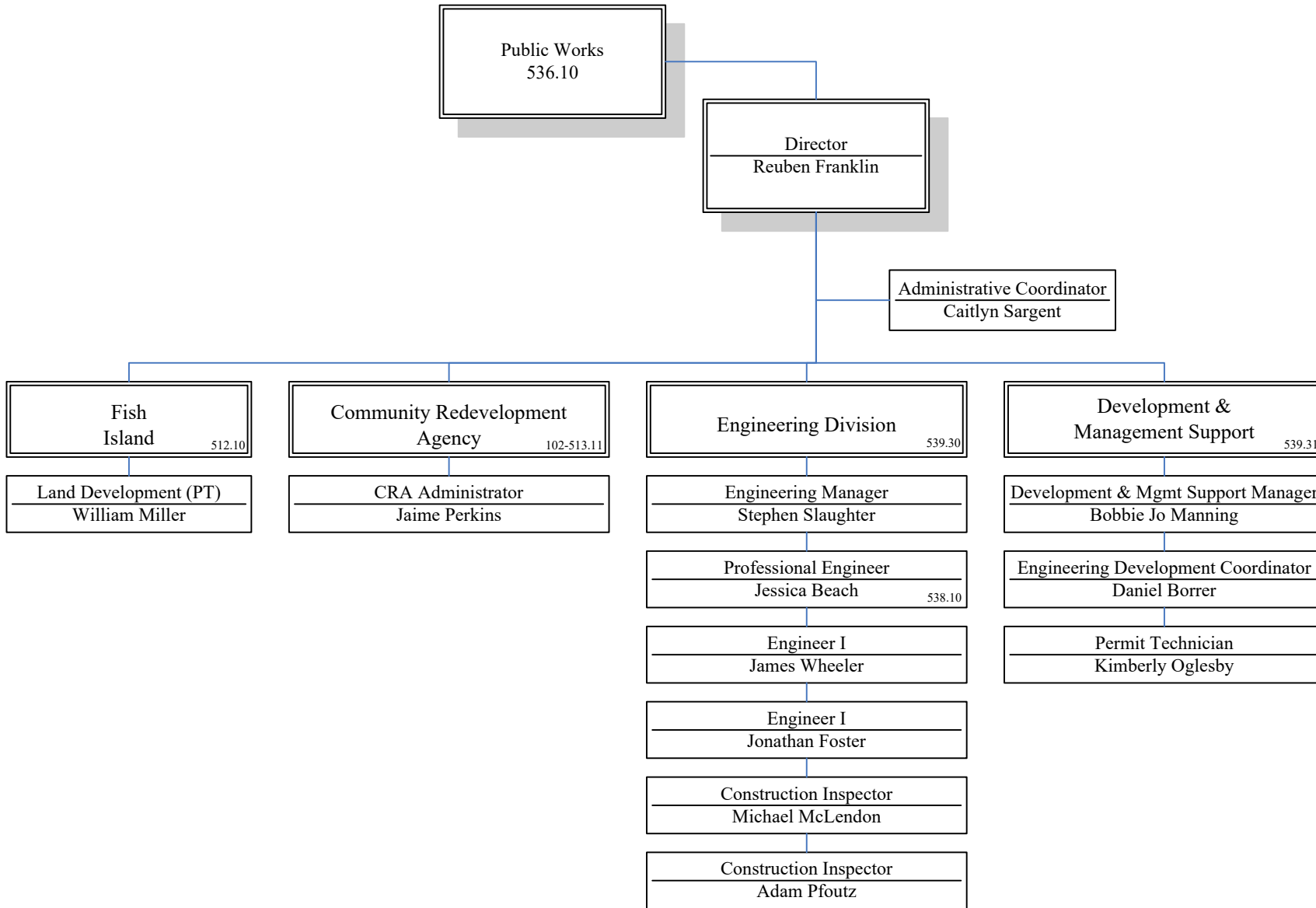






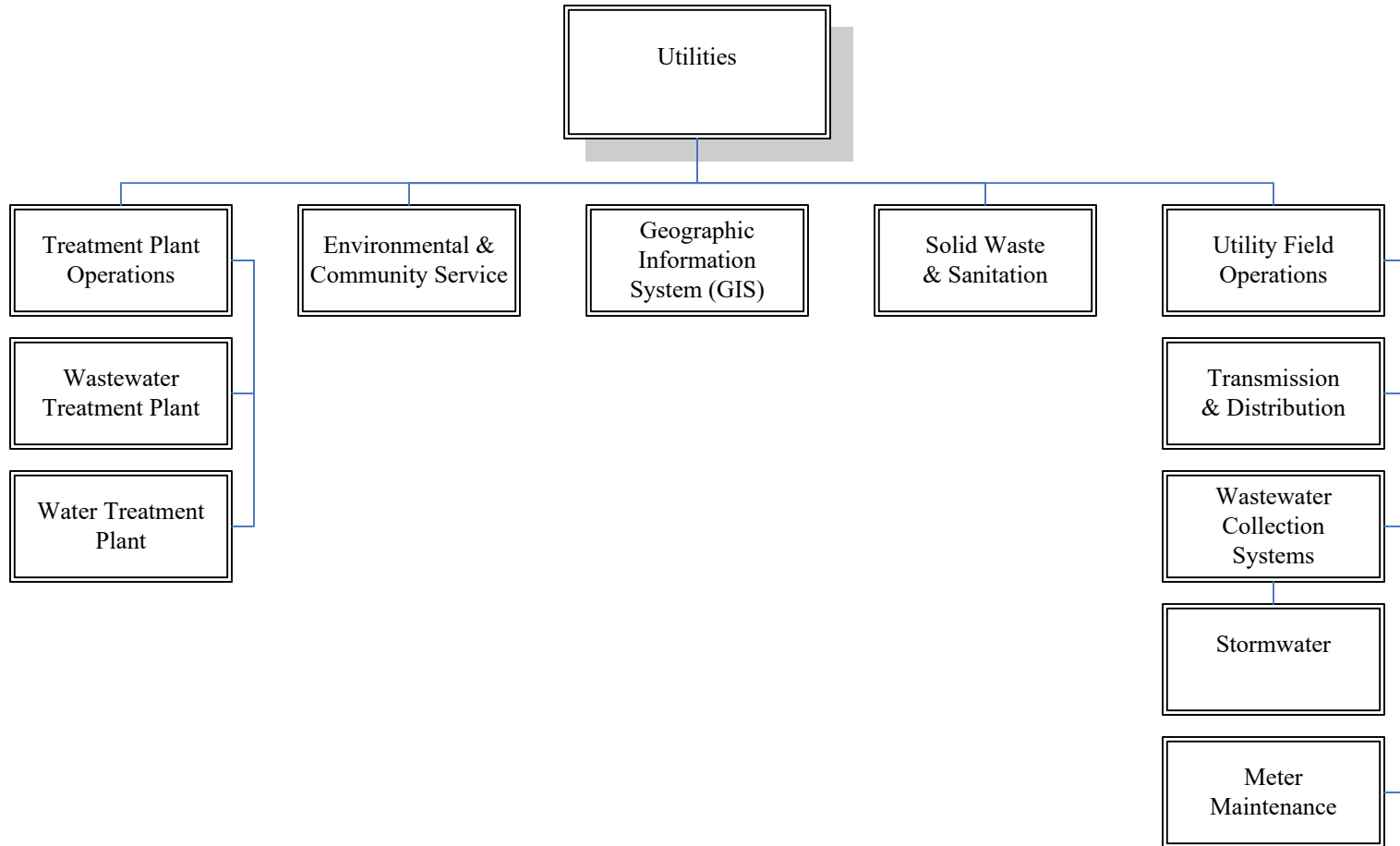
Streets & Grounds = 22 Public Works Admin = 2

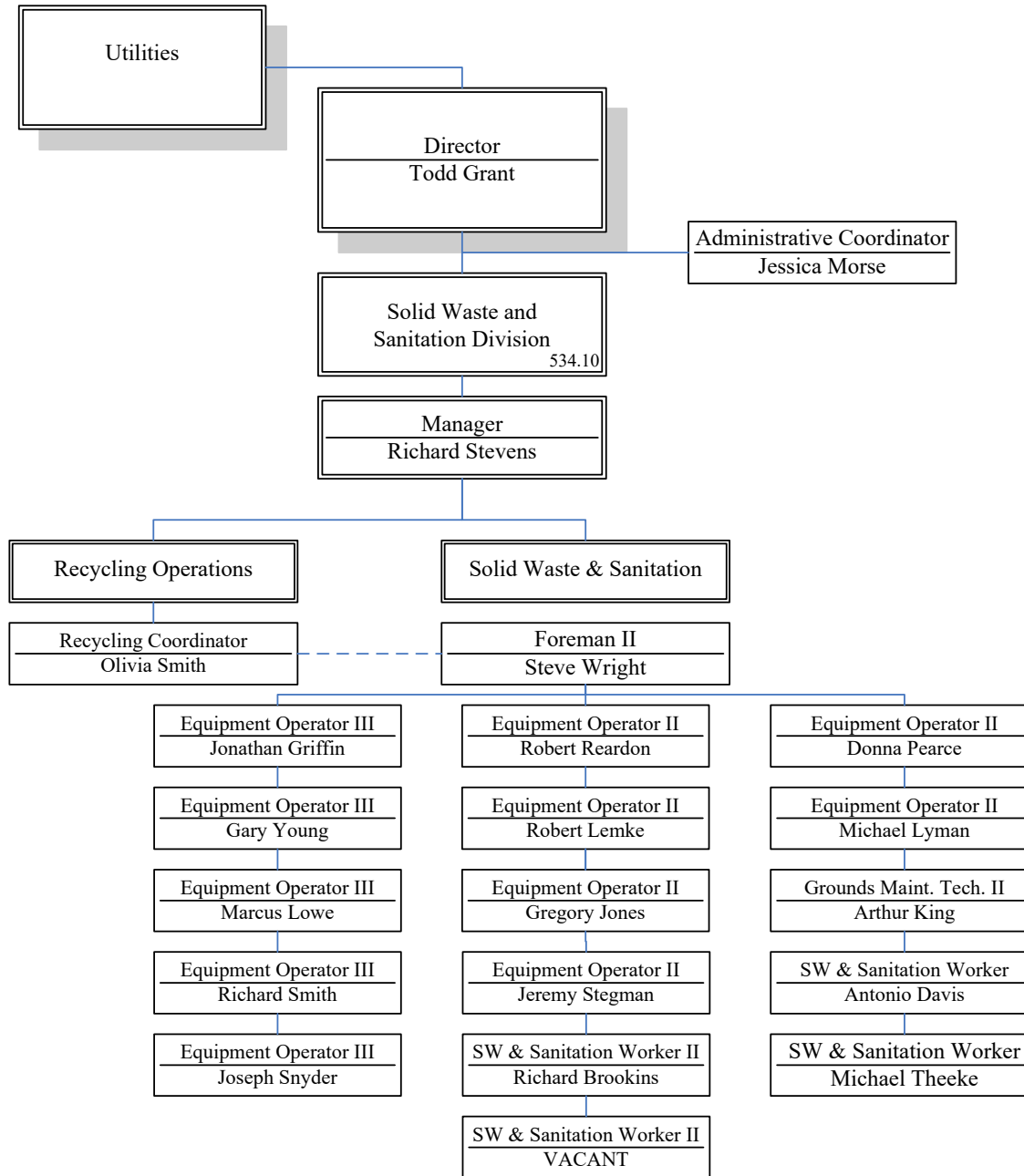




Engineering = 7 (includes GIS), Development & Management = 3, Public Works Admin = 2, CRA = 1  
 Land Development = 0.5

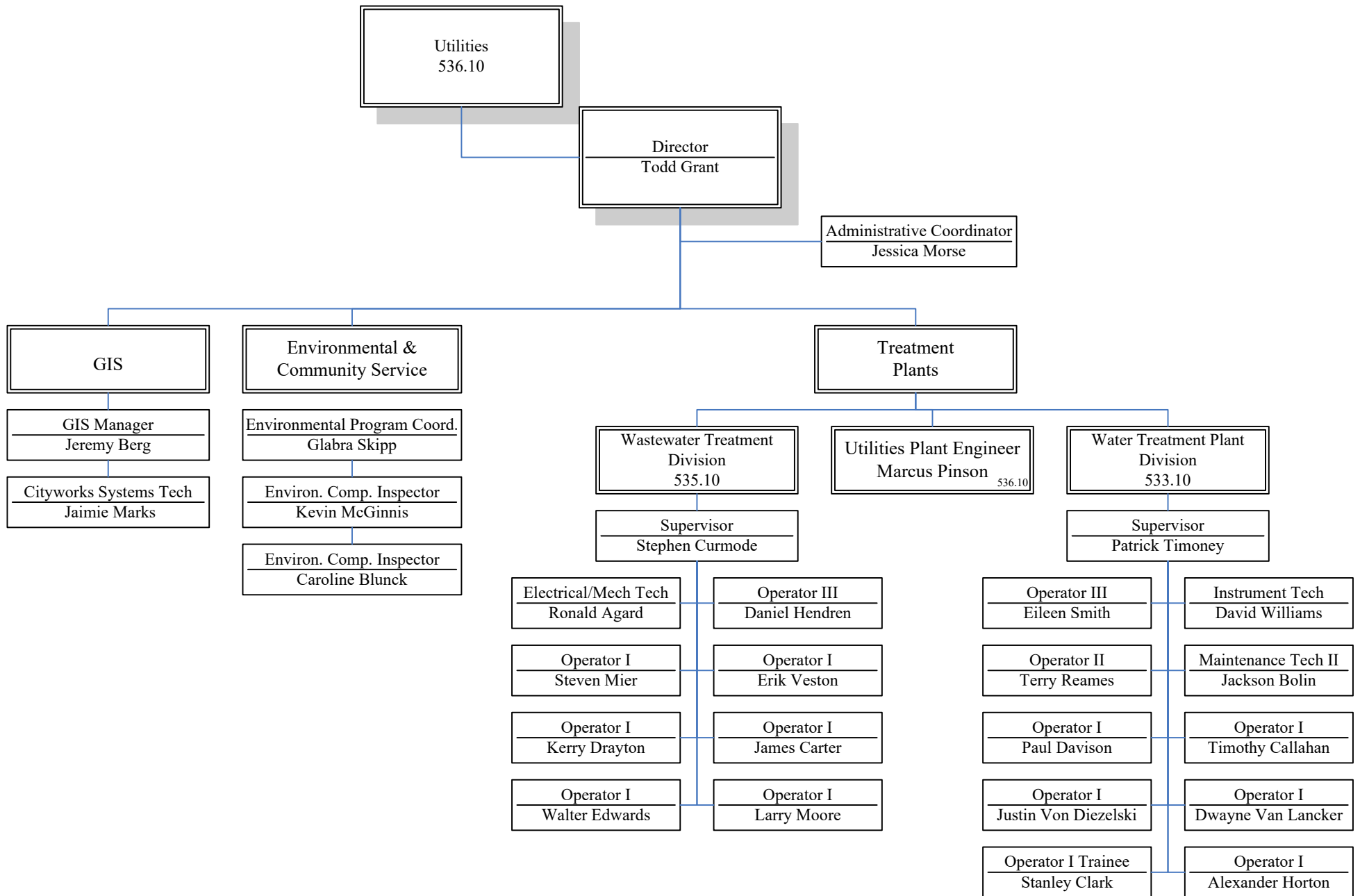




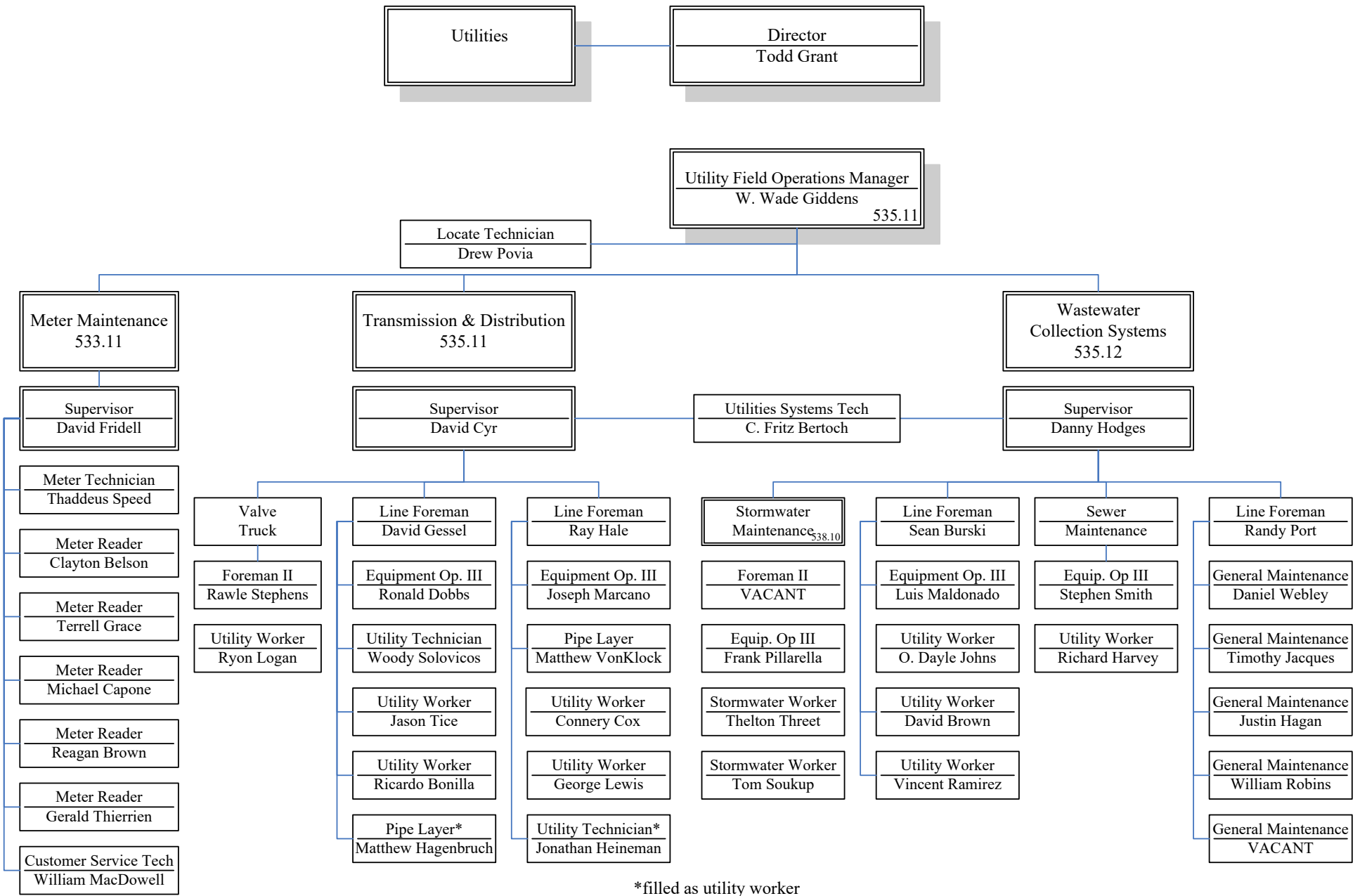


FTE: Solid Waste = 19

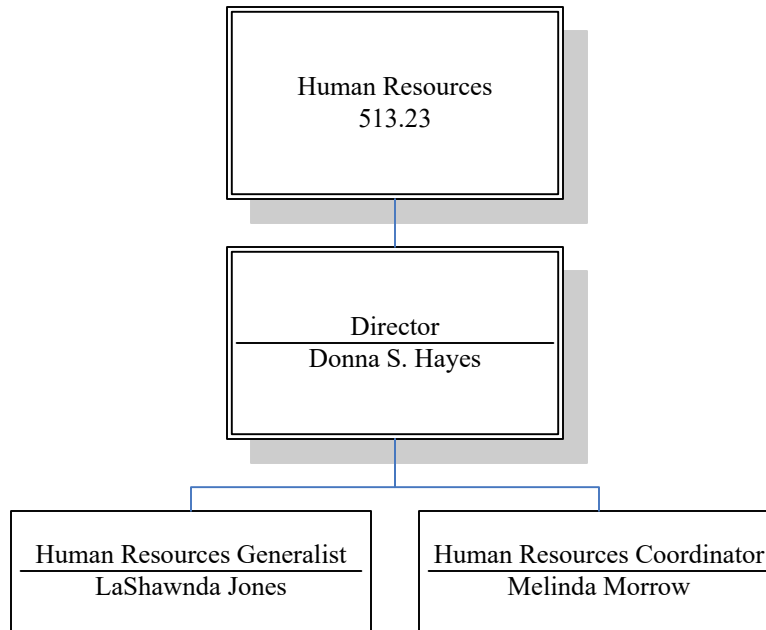
October 1, 2020

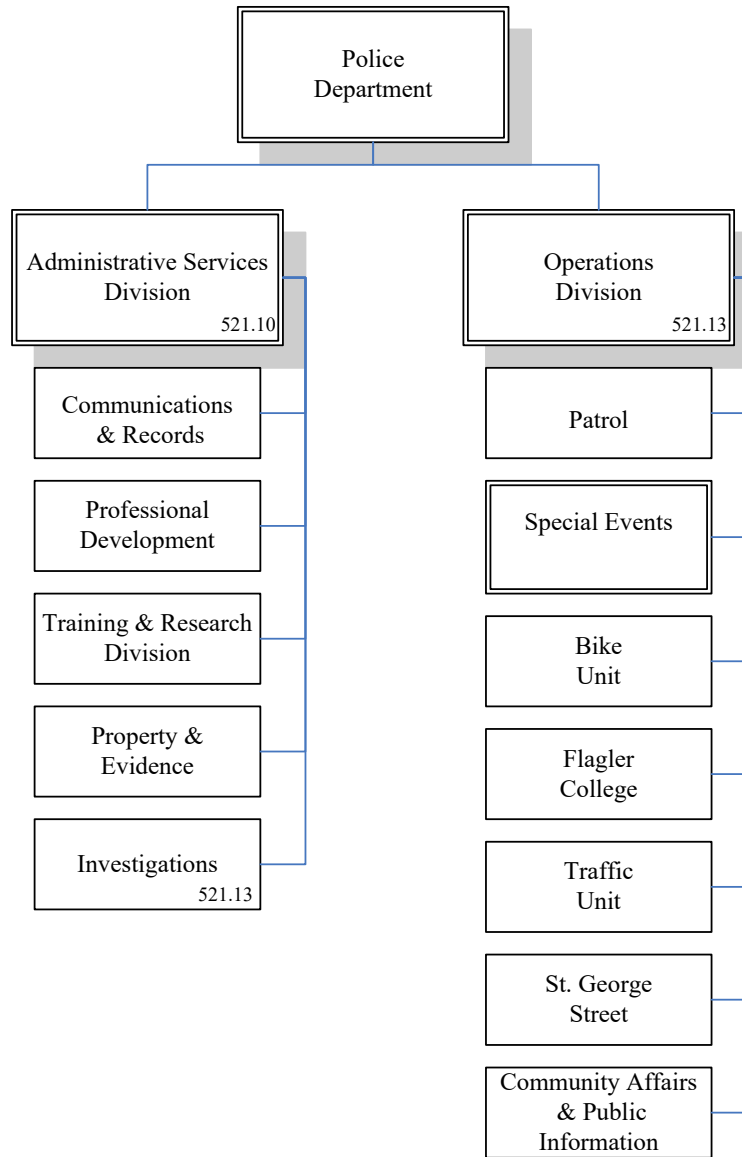


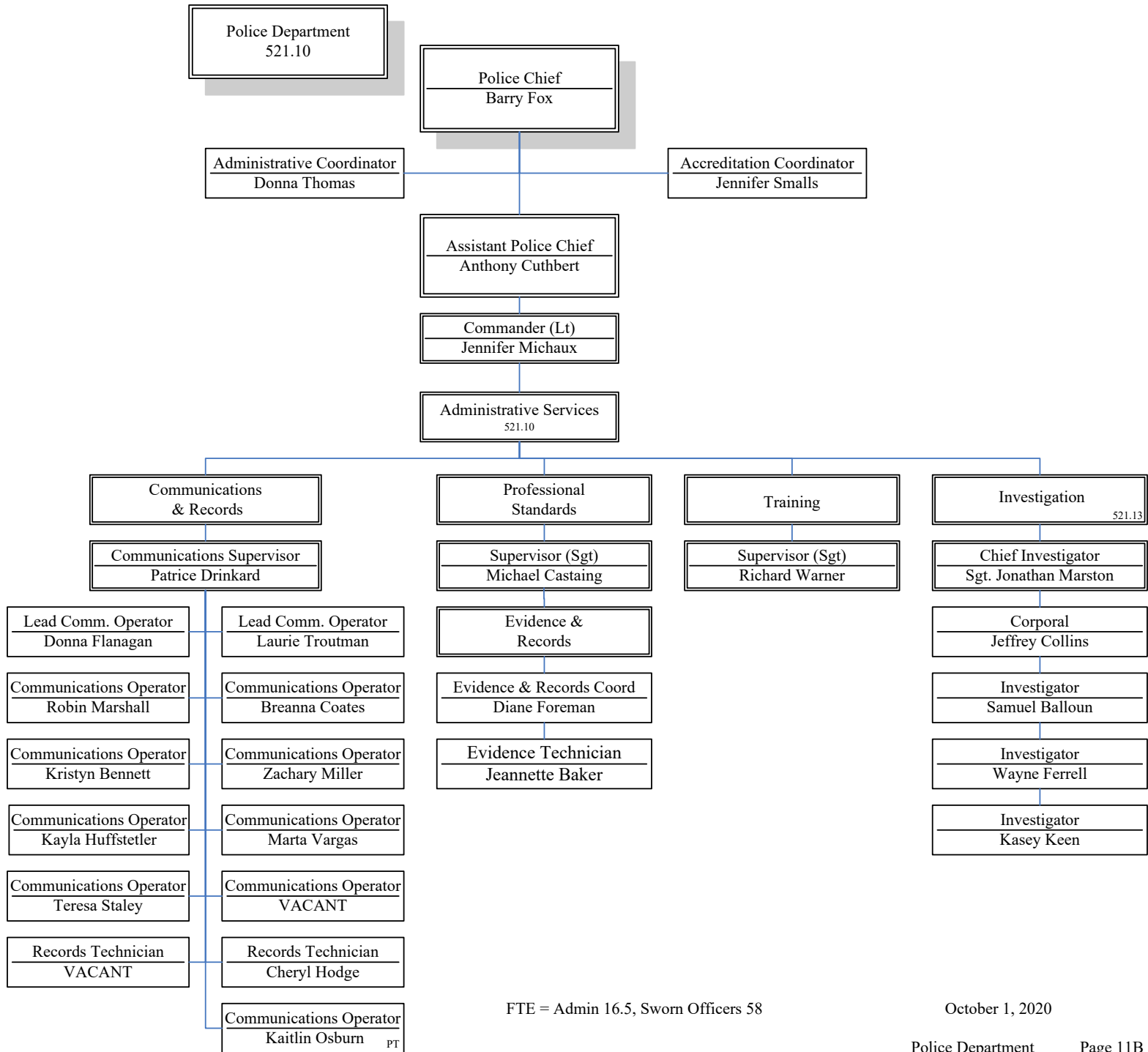
FTE: WTP = 11, WWTP = 9, GIS = 2 (counted in engineering), Utility Admin = 6



\*filled as utility worker

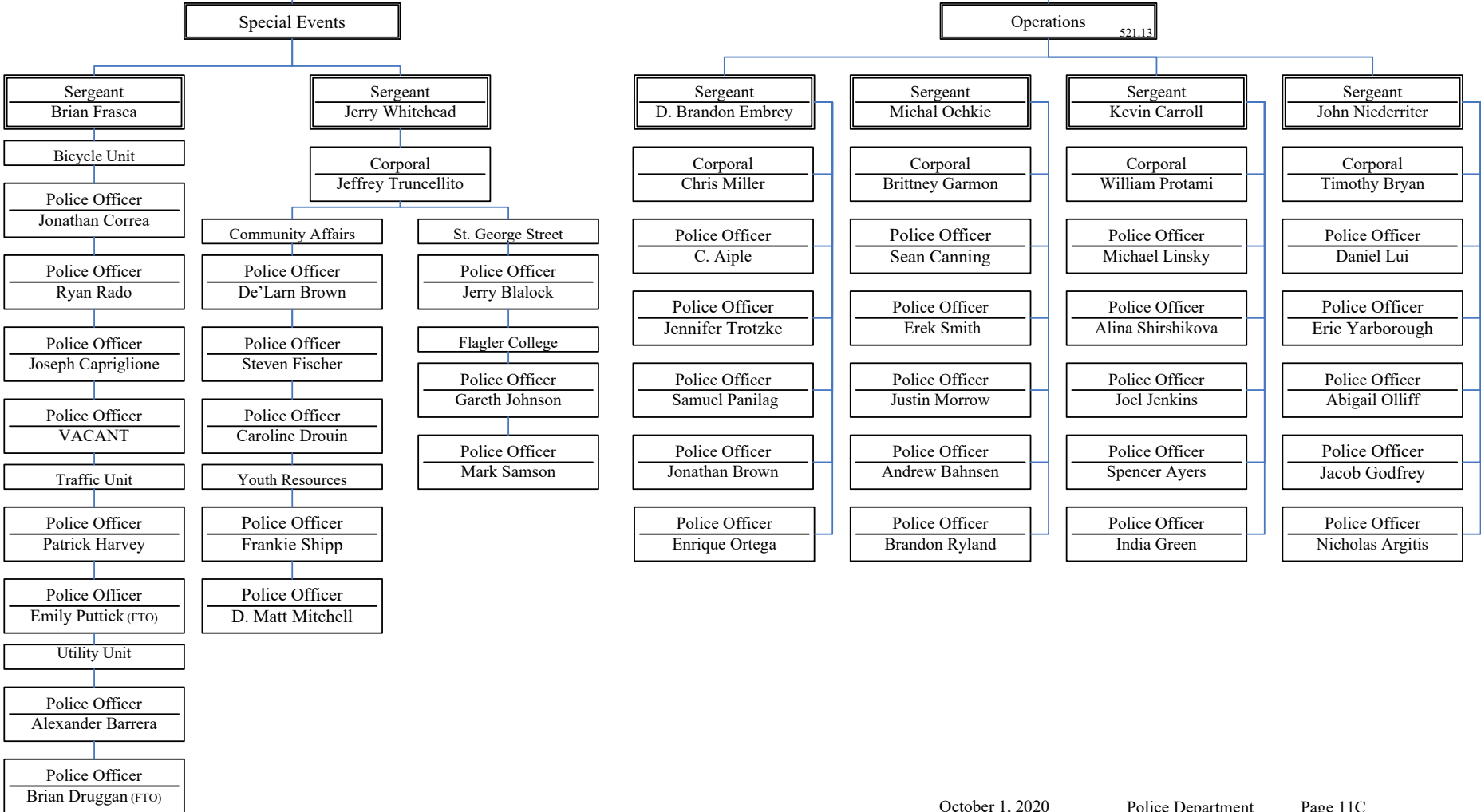
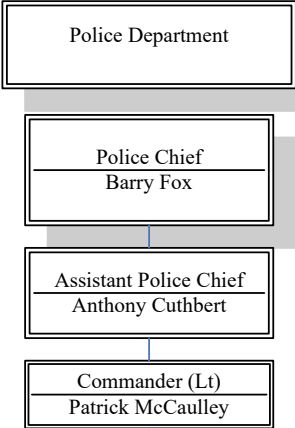




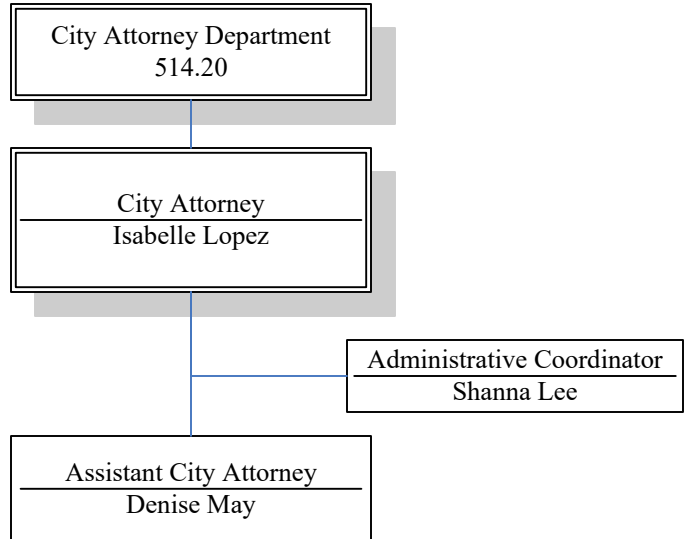
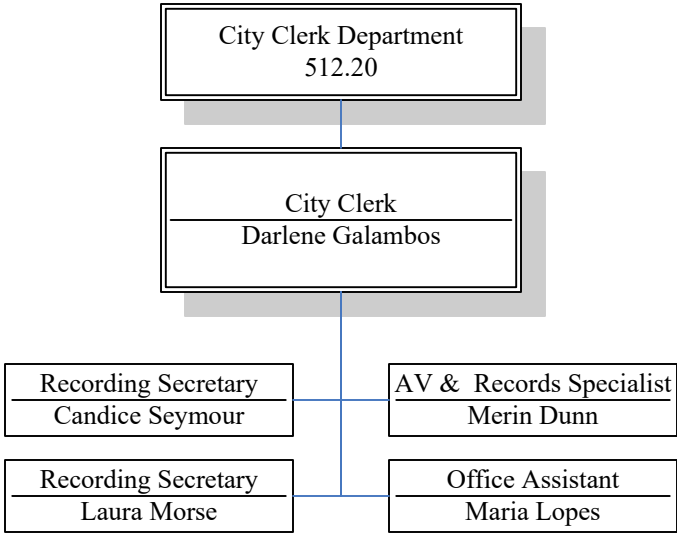


FTE = Admin 16.5, Sworn Officers 58

October 1, 2020







FTE: City Clerk = 5, City Attorney = 3

City Clerk & City Attorney