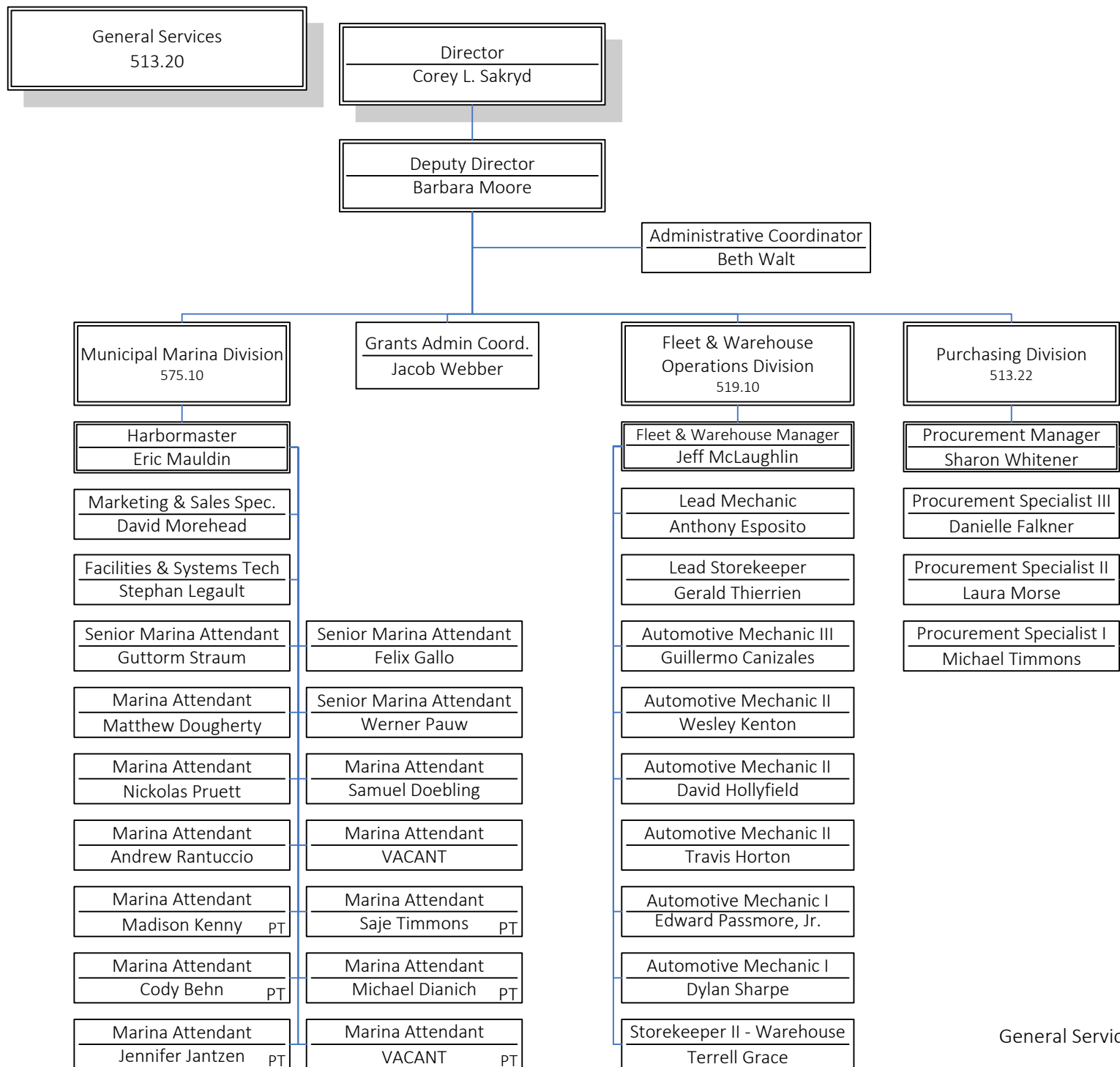
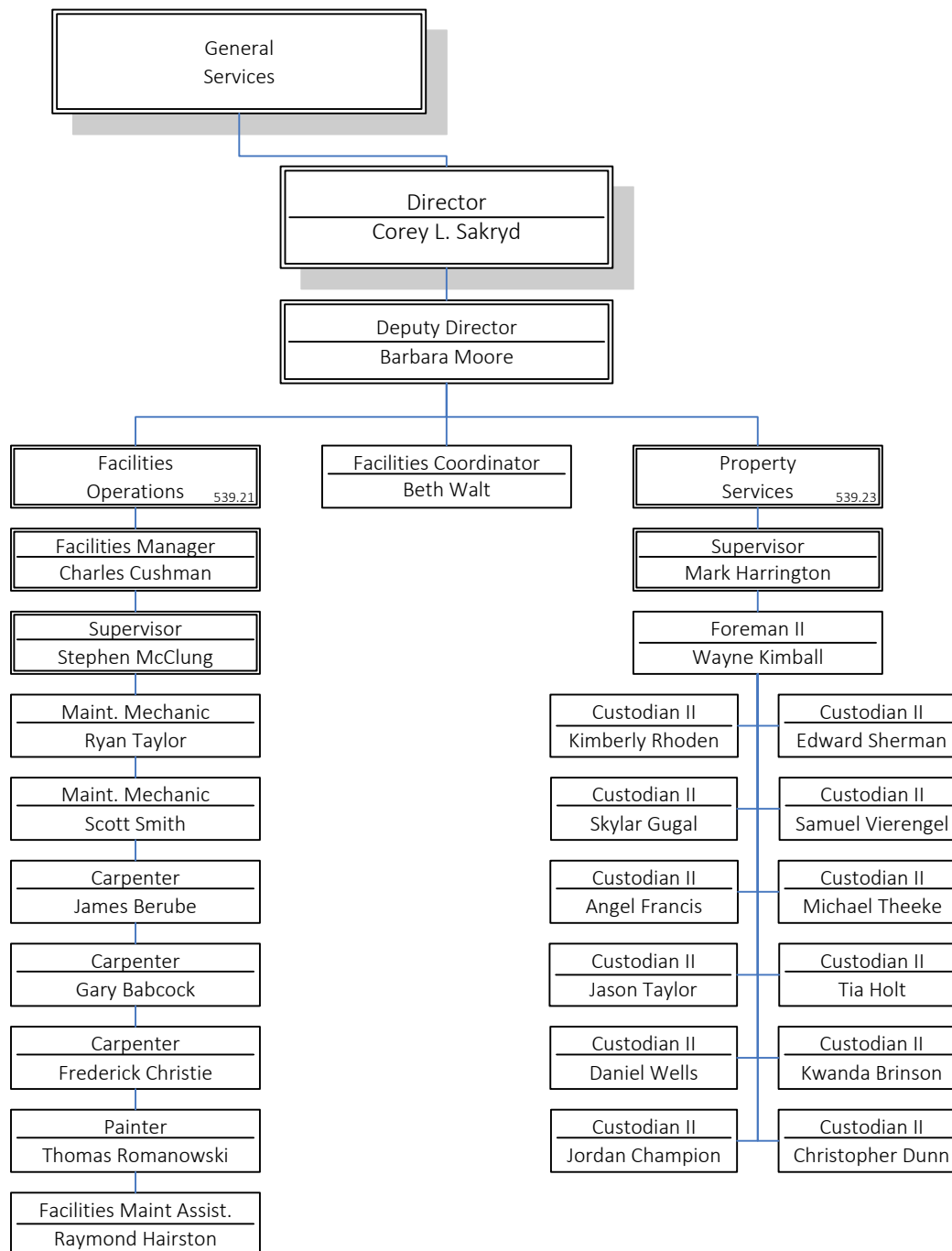


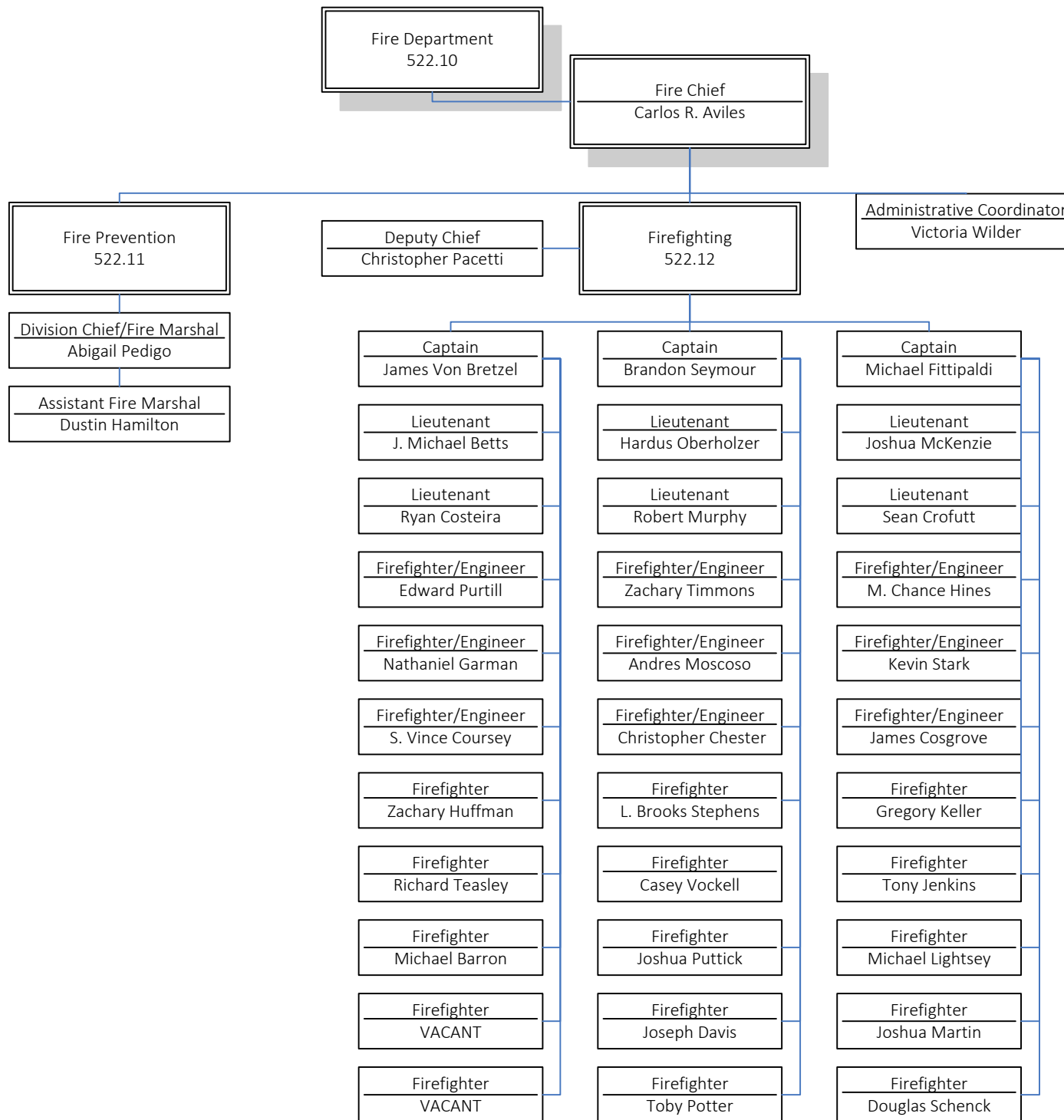
Finance

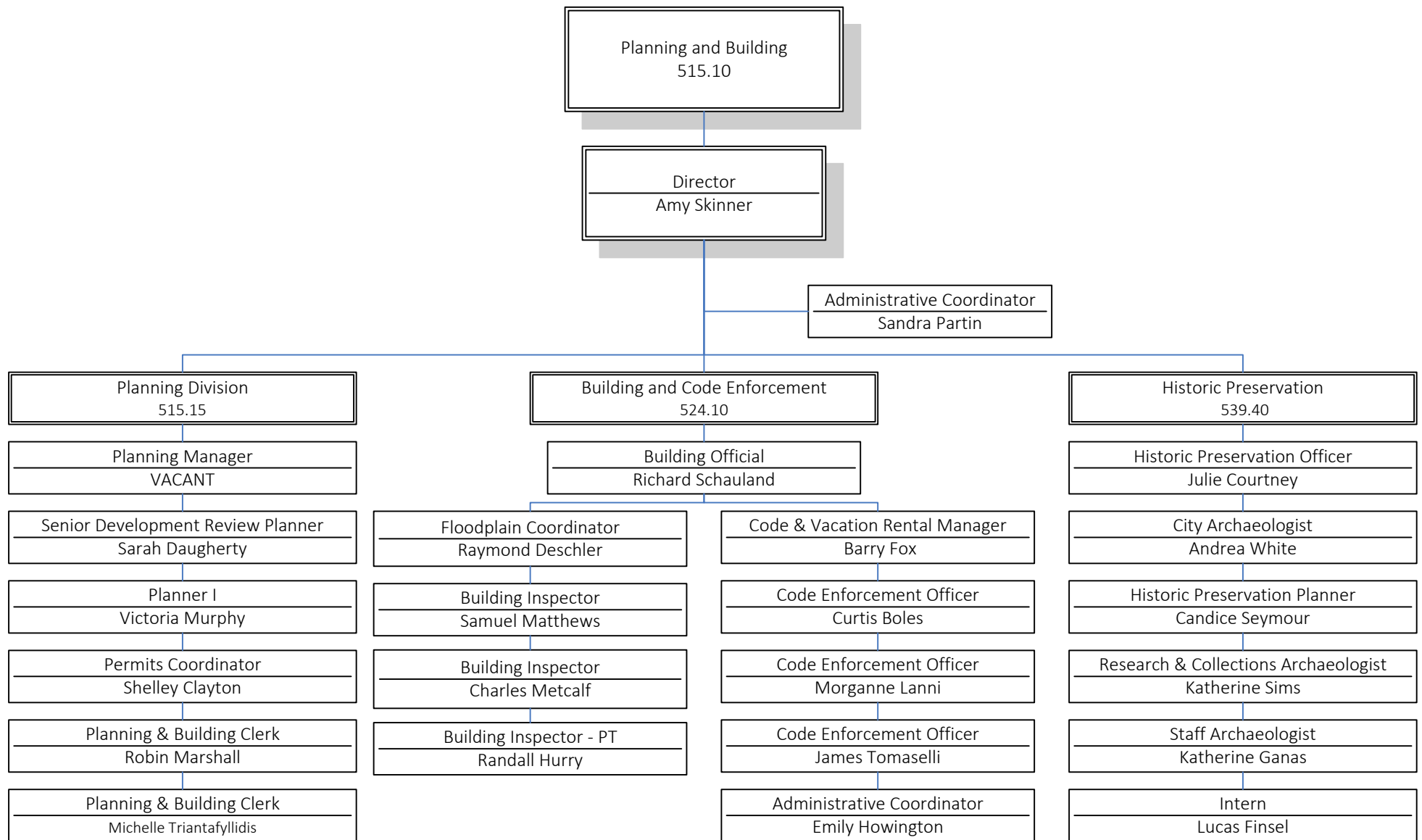


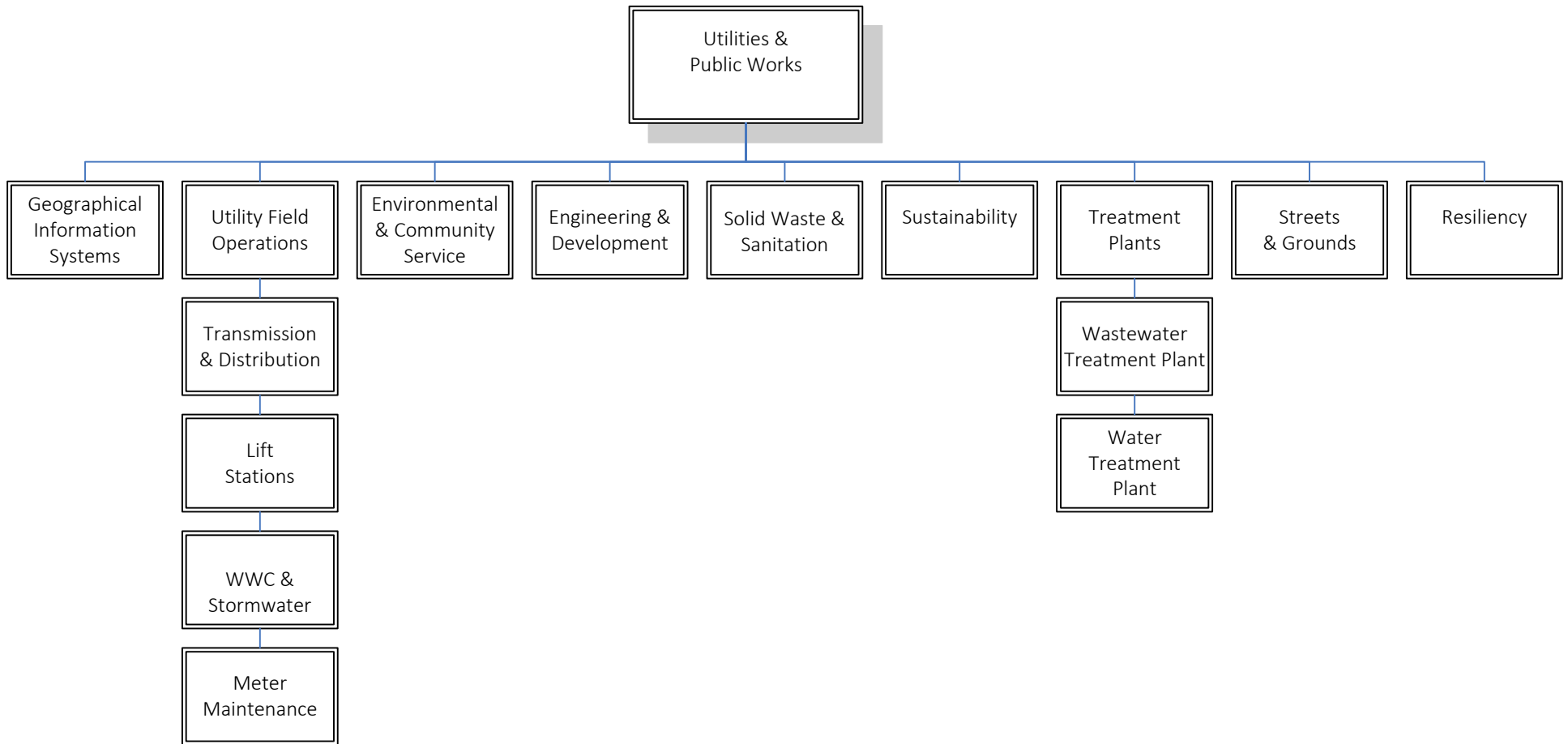


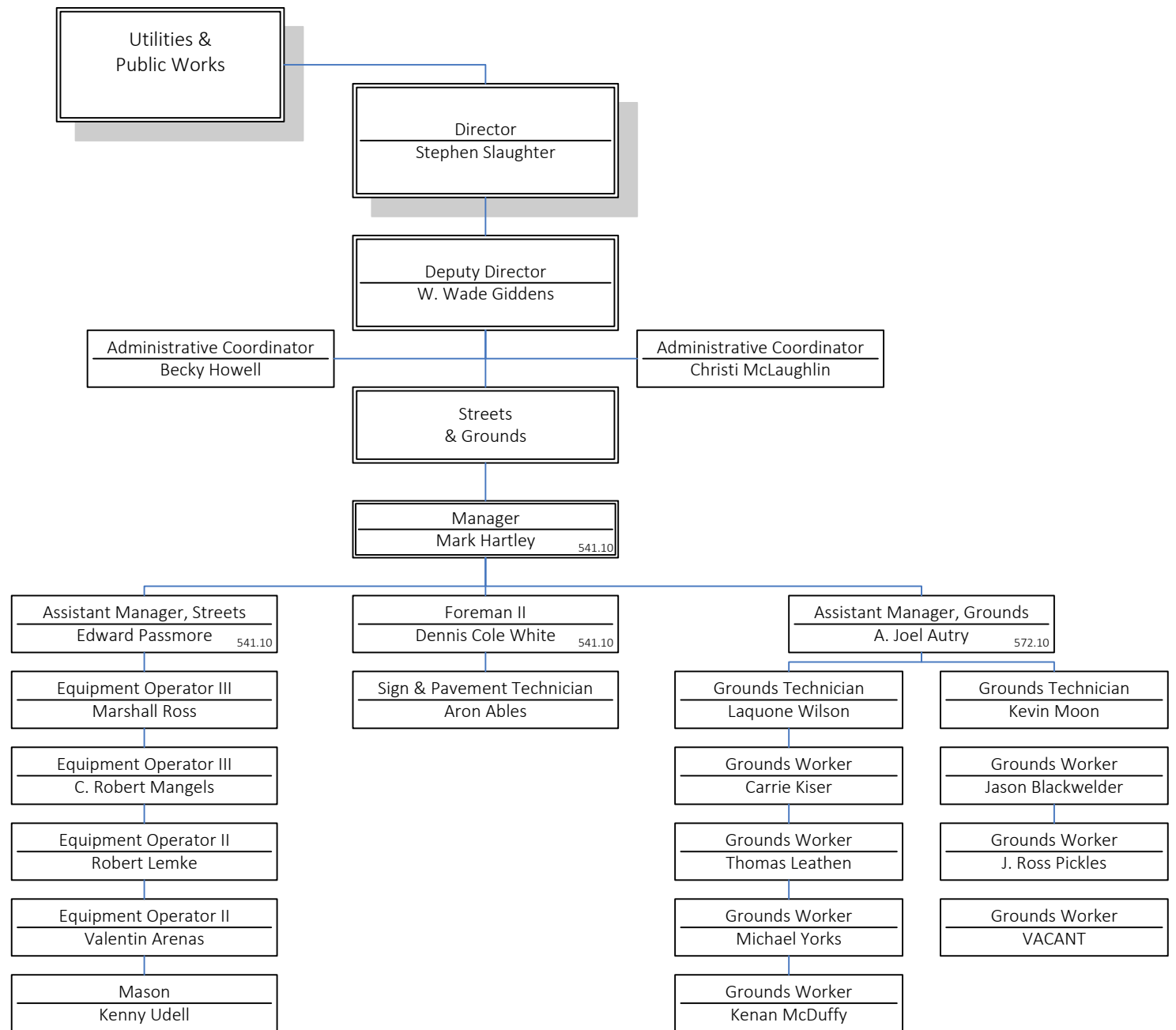


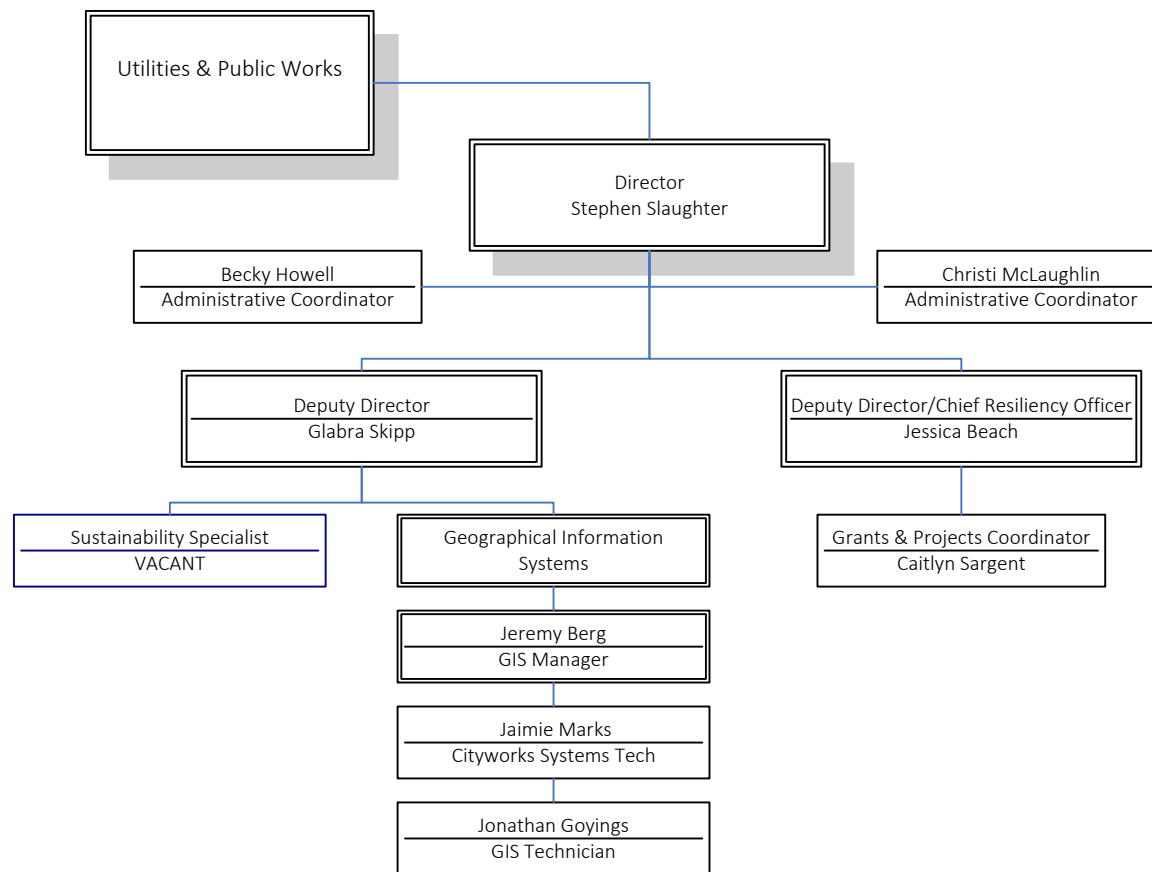




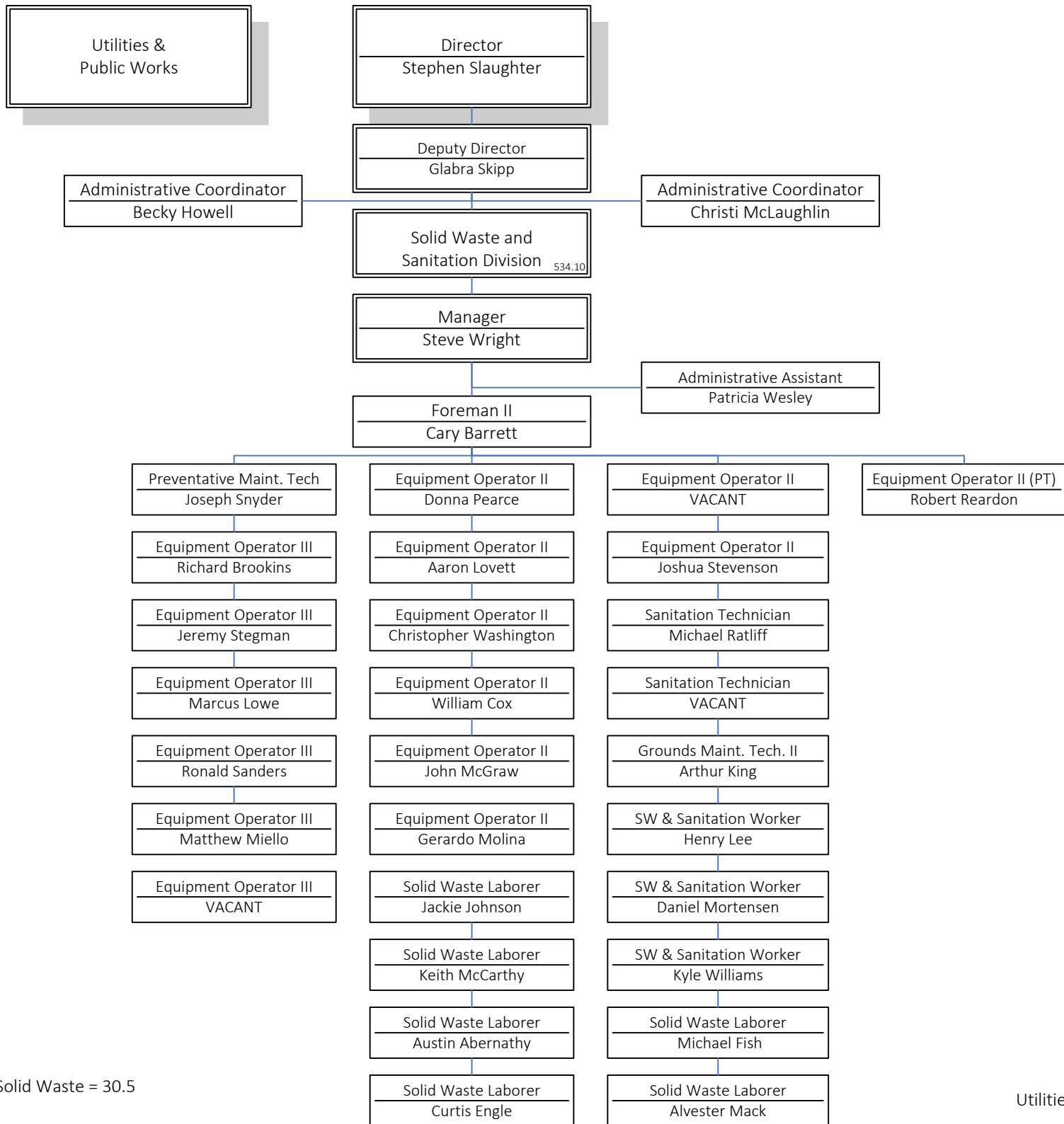






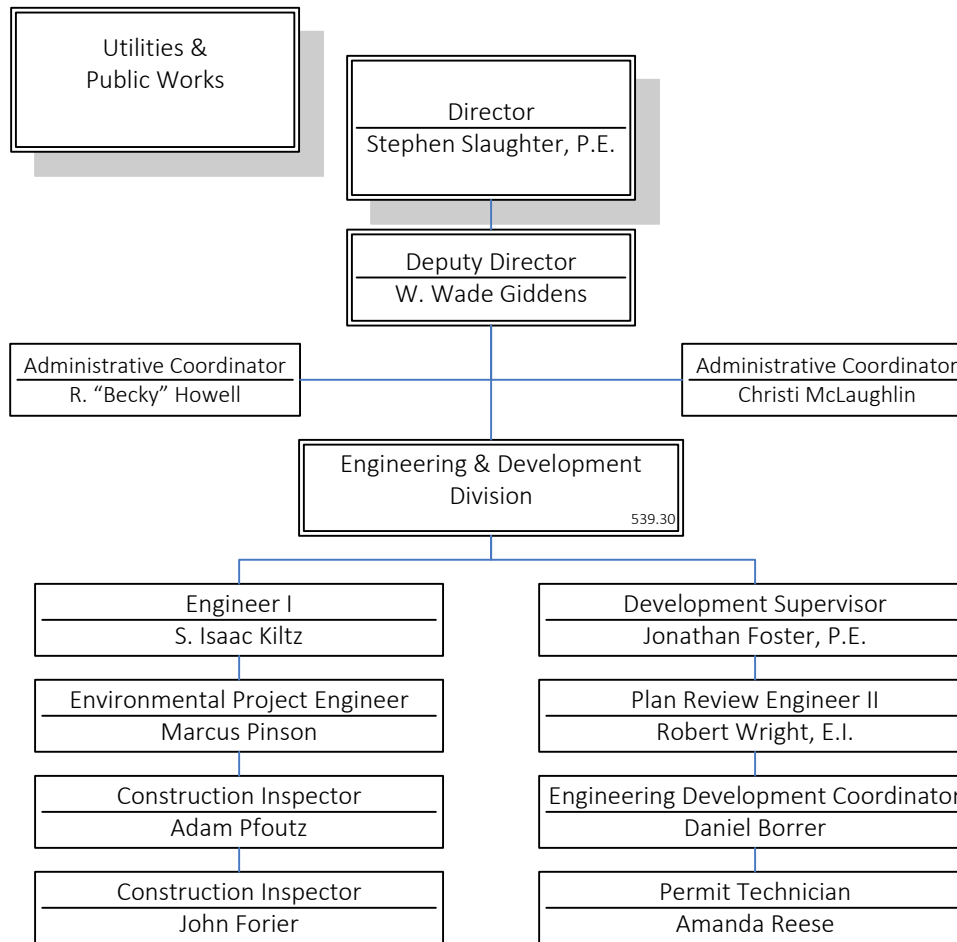


Public Works Admin = 8 (Sustainability, GIS, Resiliency & Grants)

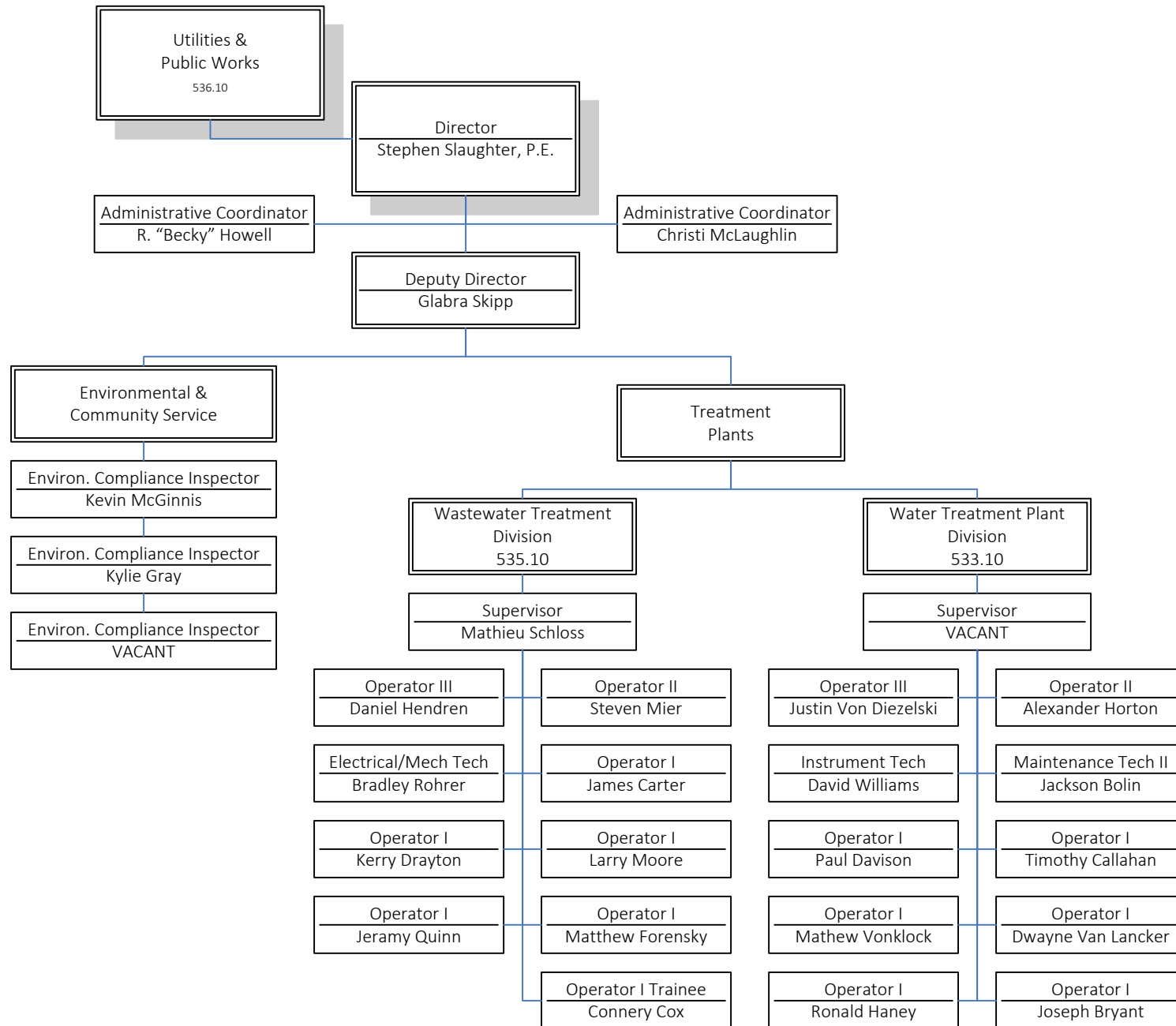


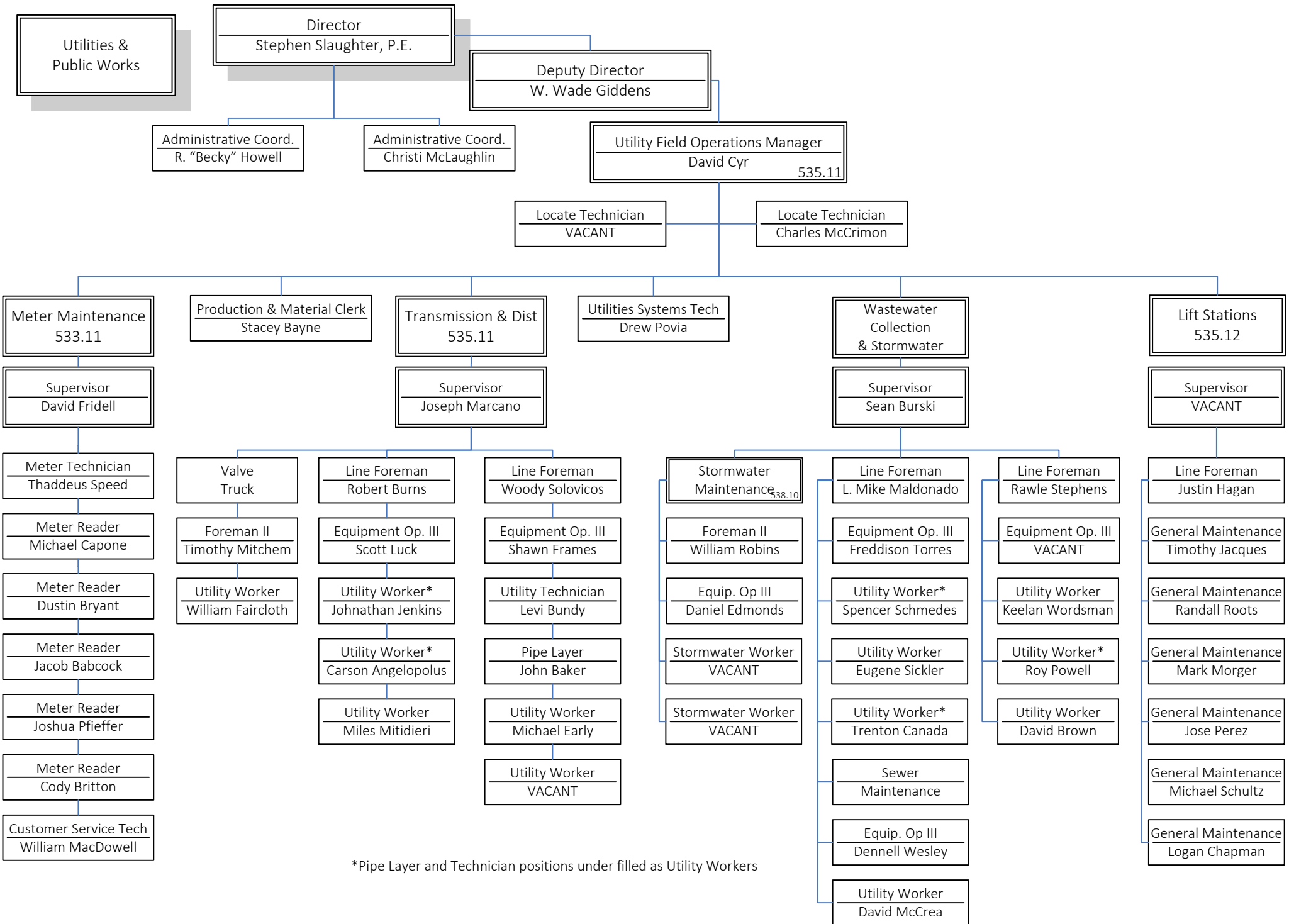
FTE: Solid Waste = 30.5

January 2025

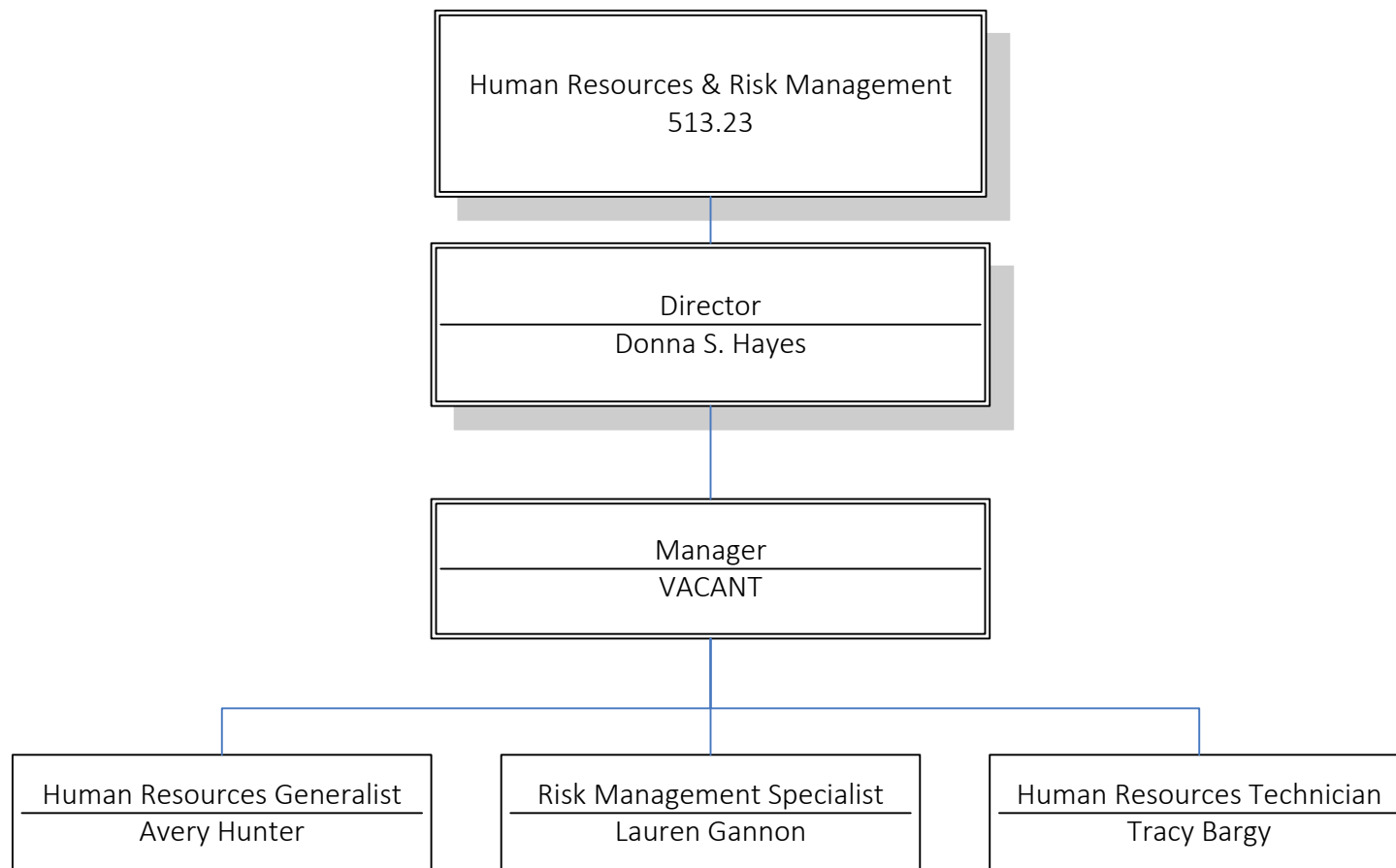


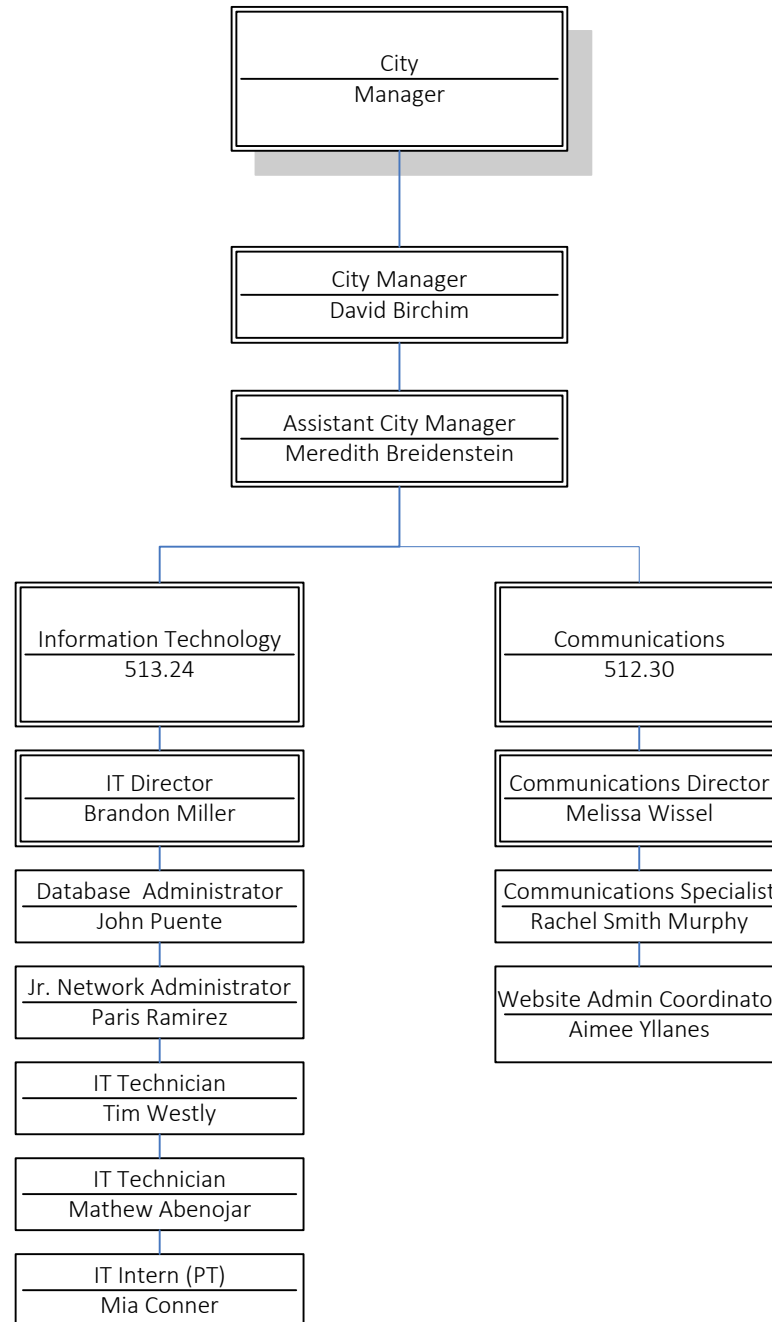


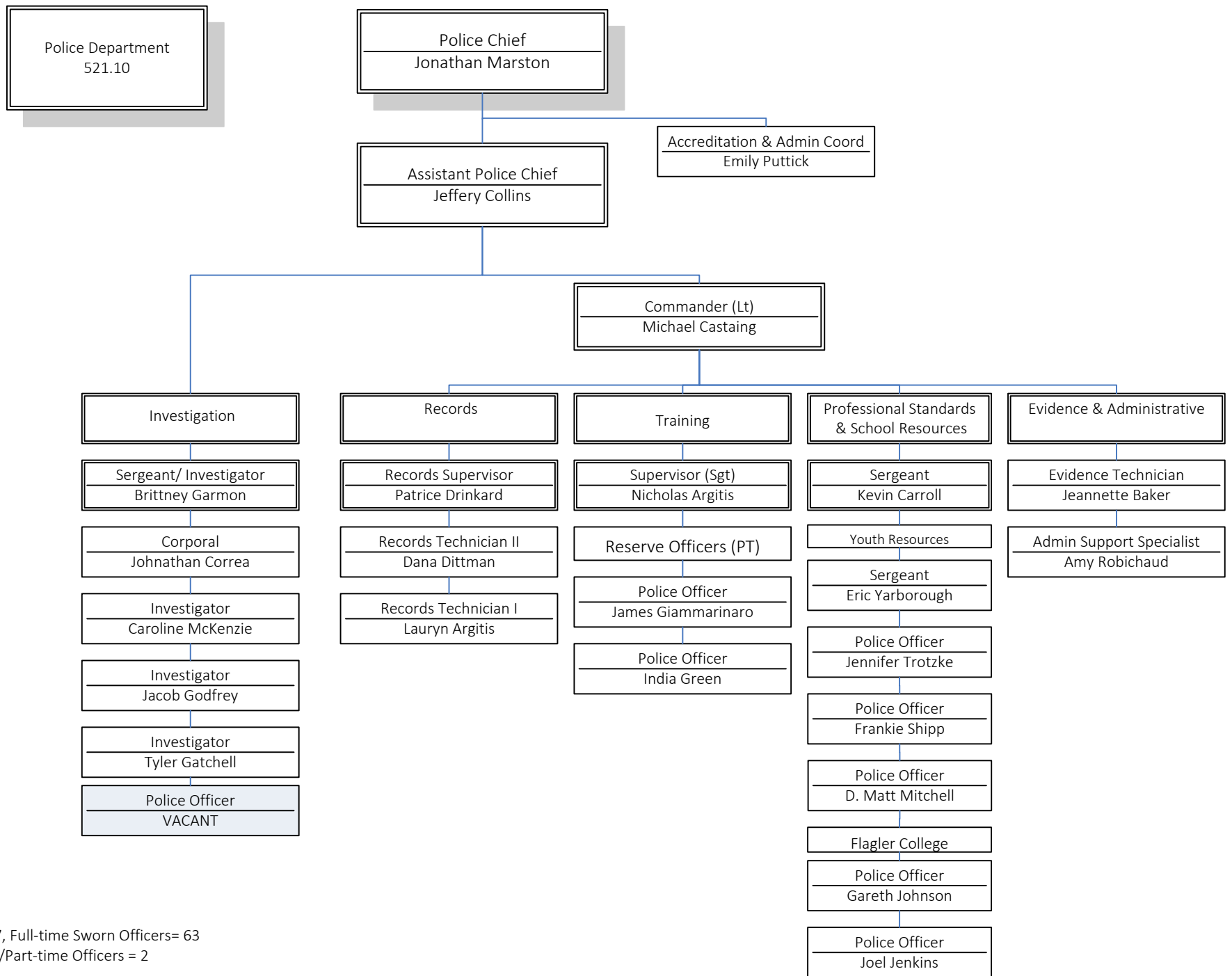




\*Pipe Layer and Technician positions under filled as Utility Workers







FTE = Admin = 7, Full-time Sworn Officers= 63  
Reserve/Part-time Officers = 2

