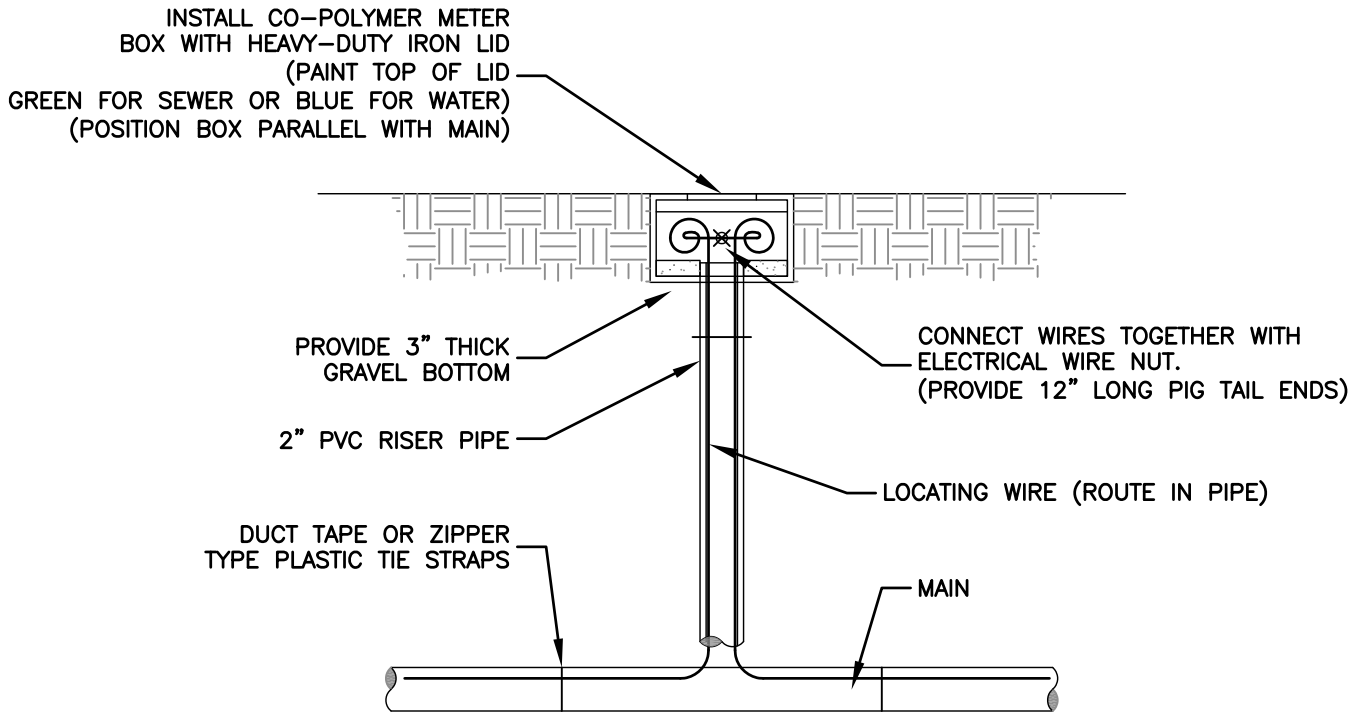


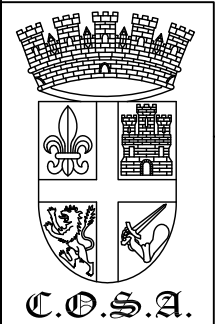
LOCATE WIRE BOX UTILIZING VALVE BOX



LOCATE WIRE BOX UTILIZING METER BOX

**NOTES:**

1. LOCATE WIRE SHALL ENTER THE VALVE BOX THROUGH A 3/4" (MIN) HOLE OR SHALL BE ROUTED THROUGH THE JOINTS OF THE VALVE BOX ADJUSTMENT SECTION.
2. SEE ADDITIONAL NOTES AND REQUIREMENTS ON DETAILS SS-56 AND W-56.



**LOCATE WIRE BOX**

REVISION  
DATE:

FEB 2017

NOT TO  
SCALE

SS-55&W-55